



ELECTRONIC COPY

LG649401963
Report verification at igi.org



September 10, 2024
IGI Report Number LG649401963
Description LABORATORY GROWN DIAMOND
Shape and Cutting Style ROUND BRILLIANT
Measurements 6.46 - 6.50 X 4.05 MM
GRADING RESULTS
Carat Weight 1.04 CARAT
Color Grade F
Clarity Grade VVS 2
Cut Grade IDEAL

LABORATORY GROWN DIAMOND REPORT

September 10, 2024
IGI Report Number LG649401963
Description LABORATORY GROWN DIAMOND
Shape and Cutting Style ROUND BRILLIANT
Measurements 6.46 - 6.50 X 4.05 MM

GRADING RESULTS

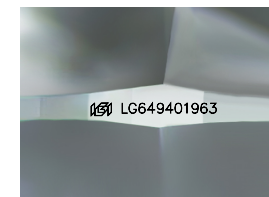
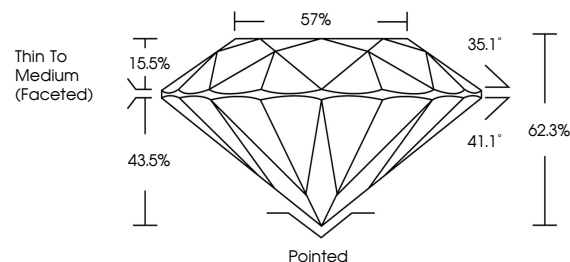
Carat Weight 1.04 CARAT
Color Grade F
Clarity Grade VVS 2
Cut Grade IDEAL

ADDITIONAL GRADING INFORMATION

Polish EXCELLENT
Symmetry EXCELLENT
Fluorescence NONE
Inscription(s) IGI LG649401963

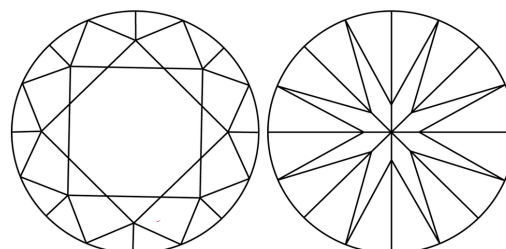
Comments: This Laboratory Grown Diamond was created by Chemical Vapor Deposition (CVD) growth process. Type IIa

PROPORTIONS



Sample Image Used

CLARITY CHARACTERISTICS



KEY TO SYMBOLS

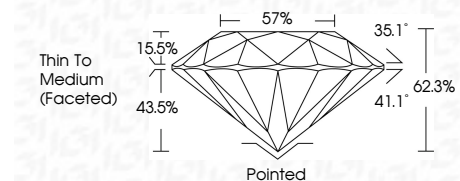
Red symbols indicate internal characteristics.
Green symbols indicate external characteristics.

COLOR

D E F G H I J Faint Very Light Light

CLARITY

IF VVS 1-2 VS 1-2 SI 1-2 I 1-3
Internally Flawless Very Very Slightly Included Very Slightly Included Slightly Included Included



ADDITIONAL GRADING INFORMATION

Polish EXCELLENT
Symmetry EXCELLENT
Fluorescence NONE
Inscription(s) IGI LG649401963
Comments: This Laboratory Grown Diamond was created by Chemical Vapor Deposition (CVD) growth process. Type IIa



September 10, 2024
IGI Report No. LG649401963
ROUND BRILLIANT
6.46 - 6.50 X 4.05 MM
1.04 CARAT F
VVS 2 IDEAL
62.3% 57%
Thin To Medium (Faceted)
Pointed EXCELLENT EXCELLENT NONE
None IGI LG649401963
Comments: This Laboratory Grown Diamond was created by Chemical Vapor Deposition (CVD) growth process. Type IIa