



ELECTRONIC COPY

LG649402000
Report verification at igi.org



September 10, 2024

IGI Report Number **LG649402000**

Description **LABORATORY GROWN DIAMOND**

Shape and Cutting Style **ROUND BRILLIANT**

Measurements **6.99 - 7.03 X 4.16 MM**

GRADING RESULTS

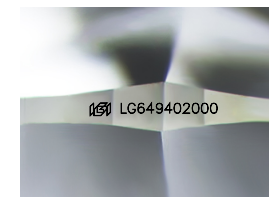
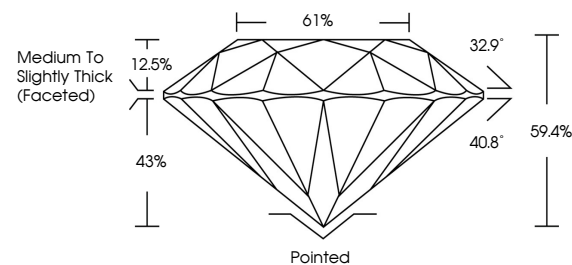
Carat Weight **1.25 CARAT**

Color Grade **F**

Clarity Grade **VS 1**

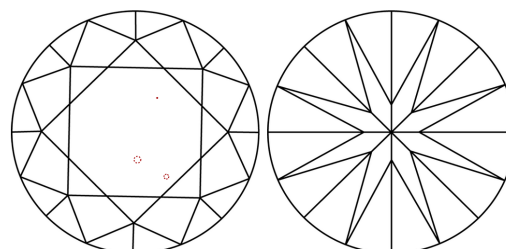
Cut Grade **EXCELLENT**

PROPORTIONS



Sample Image Used

CLARITY CHARACTERISTICS



KEY TO SYMBOLS

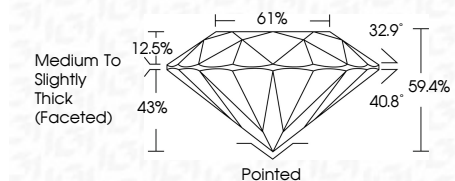
Red symbols indicate internal characteristics.
Green symbols indicate external characteristics.

COLOR

D E F G H I J Faint Very Light Light

CLARITY

IF	VS ¹⁻²	VS ¹⁻²	SI ¹⁻²	I ¹⁻³
Internally Flawless	Very Very Slightly Included	Very Slightly Included	Slightly Included	Included



ADDITIONAL GRADING INFORMATION

Polish **EXCELLENT**

Symmetry **EXCELLENT**

Fluorescence **NONE**

Inscription(s) **IGI LG649402000**

Comments: This Laboratory Grown Diamond was created by Chemical Vapor Deposition (CVD) growth process. Type IIa



IGI



September 10, 2024
IGI Report No LG649402000
ROUND BRILLIANT
6.99 - 7.03 X 4.16 MM
Carat Weight 1.25 CARAT
Color Grade F
Clarity Grade VS 1
Cut Grade EXCELLENT
Depth 61.4%
Table 61%
Girdle Medium To Slightly Thick (Faceted)
Culet Pointed
Polish EXCELLENT
Symmetry EXCELLENT
Fluorescence NONE
Inscription(s) IGI LG649402000
Comments: This Laboratory Grown Diamond was created by Chemical Vapor Deposition (CVD) growth process. Type IIa