



ELECTRONIC COPY

LG649402485
Report verification at igi.org



September 18, 2024

IGI Report Number **LG649402485**

Description **LABORATORY GROWN DIAMOND**

Shape and Cutting Style **PRINCESS CUT**

Measurements **8.05 X 7.90 X 5.52 MM**

GRADING RESULTS

Carat Weight **3.03 CARATS**

Color Grade **F**

Clarity Grade **VVS 2**

LABORATORY GROWN DIAMOND REPORT

September 18, 2024

IGI Report Number **LG649402485**

Description **LABORATORY GROWN DIAMOND**

Shape and Cutting Style **PRINCESS CUT**

Measurements **8.05 X 7.90 X 5.52 MM**

GRADING RESULTS

Carat Weight **3.03 CARATS**

Color Grade **F**

Clarity Grade **VVS 2**

ADDITIONAL GRADING INFORMATION

Polish **EXCELLENT**

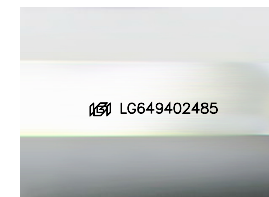
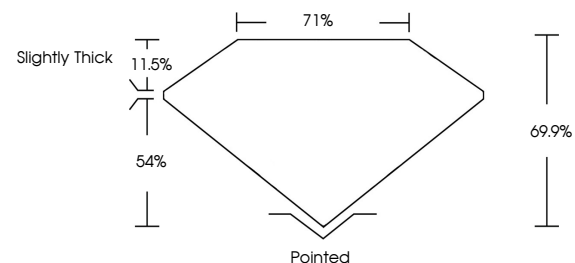
Symmetry **VERY GOOD**

Fluorescence **NONE**

Inscription(s) **IGI LG649402485**

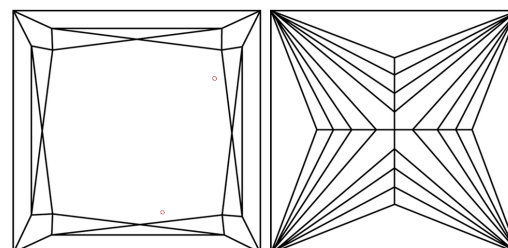
Comments: This Laboratory Grown Diamond was created by Chemical Vapor Deposition (CVD) growth process. Type IIa

PROPORTIONS



Sample Image Used

CLARITY CHARACTERISTICS



KEY TO SYMBOLS

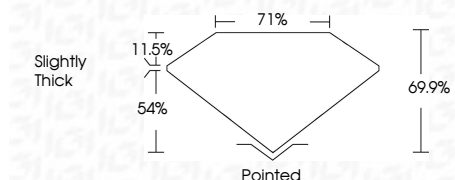
Red symbols indicate internal characteristics.
Green symbols indicate external characteristics.

COLOR

D E F G H I J Faint Very Light Light

CLARITY

IF	VS ¹⁻²	VS ¹⁻²	SI ¹⁻²	I ¹⁻³
Internally Flawless	Very Very Slightly Included	Very Slightly Included	Slightly Included	Included



ADDITIONAL GRADING INFORMATION

Polish **EXCELLENT**

Symmetry **VERY GOOD**

Fluorescence **NONE**

Inscription(s) **IGI LG649402485**

Comments: This Laboratory Grown Diamond was created by Chemical Vapor Deposition (CVD) growth process. Type IIa



IGI



September 18, 2024
IGI Report No. LG649402485
PRINCESS CUT

3.03 CARATS
F

8.05 X 7.90 X 5.52 MM
VVS 2
69.9%
71%
Slightly Thick

Pointed
EXCELLENT
VERY GOOD
NONE
IGI LG649402485

Comments: This Laboratory Grown Diamond was created by Chemical Vapor Deposition (CVD) growth process. Type IIa