



ELECTRONIC COPY

LABORATORY GROWN DIAMOND REPORT

October 1, 2024
IGI Report Number LG649403429
Description LABORATORY GROWN DIAMOND
Shape and Cutting Style PRINCESS CUT
Measurements 6.97 X 6.91 X 4.85 MM

GRADING RESULTS

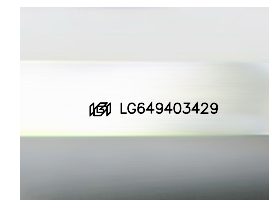
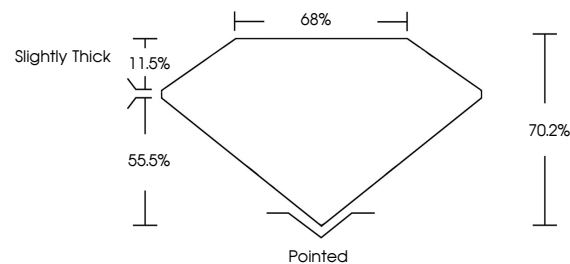
Carat Weight 2.04 CARATS
Color Grade E
Clarity Grade VS 1

ADDITIONAL GRADING INFORMATION

Polish EXCELLENT
Symmetry EXCELLENT
Fluorescence NONE
Inscription(s) LG649403429

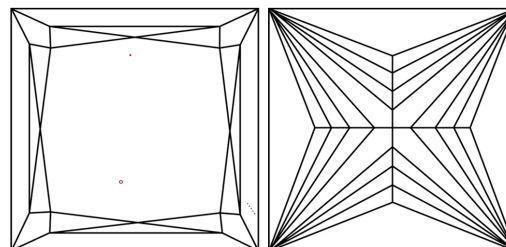
Comments: This Laboratory Grown Diamond was created by Chemical Vapor Deposition (CVD) growth process.
Type IIa

PROPORTIONS



Sample Image Used

CLARITY CHARACTERISTICS



KEY TO SYMBOLS

Red symbols indicate internal characteristics.
Green symbols indicate external characteristics.

COLOR

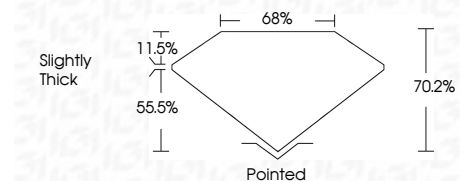
D E F G H I J Faint Very Light Light

CLARITY

IF VS 1-2 VS 1-2 SI 1-2 I 1-3
Internally Flawless Very Very Slightly Included Very Slightly Included Slightly Included Included



October 1, 2024
IGI Report Number LG649403429
Description LABORATORY GROWN DIAMOND
Shape and Cutting Style PRINCESS CUT
Measurements 6.97 X 6.91 X 4.85 MM
GRADING RESULTS
Carat Weight 2.04 CARATS
Color Grade E
Clarity Grade VS 1



ADDITIONAL GRADING INFORMATION

Polish EXCELLENT
Symmetry EXCELLENT
Fluorescence NONE
Inscription(s) LG649403429
Comments: This Laboratory Grown Diamond was created by Chemical Vapor Deposition (CVD) growth process.
Type IIa



October 1, 2024
IGI Report No LG649403429
PRINCESS CUT
2.04 CARATS
E
6.97 X 6.91 X 4.85 MM
Carat Weight
Color Grade
Clarity Grade
Depth
Table
Girdle
Slightly Thick
Pointed
EXCELLENT
EXCELLENT
NONE
None
None
None
 LG649403429
Inscription(s)
Comments: This Laboratory Grown Diamond was created by Chemical Vapor Deposition (CVD) growth process.
Type IIa