



**ELECTRONIC COPY**

LG649403430  
Report verification at igi.org



October 1, 2024

IGI Report Number **LG649403430**

Description **LABORATORY GROWN DIAMOND**

Shape and Cutting Style **PRINCESS CUT**

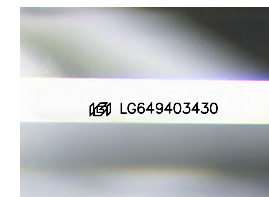
Measurements **7.55 X 7.54 X 5.36 MM**

**GRADING RESULTS**

Carat Weight **2.55 CARATS**

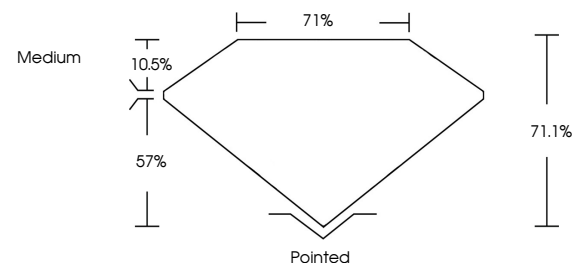
Color Grade **F**

Clarity Grade **VVS 2**

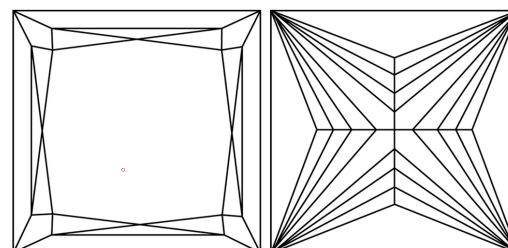


Sample Image Used

**PROPORTIONS**



**CLARITY CHARACTERISTICS**



**KEY TO SYMBOLS**

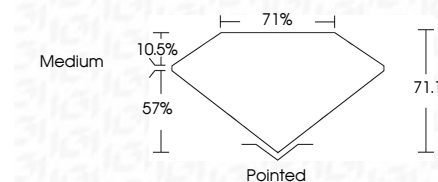
Red symbols indicate internal characteristics.  
Green symbols indicate external characteristics.

**COLOR**

D E F G H I J Faint Very Light Light

**CLARITY**

IF	VS <sup>1-2</sup>	VS <sup>1-2</sup>	SI <sup>1-2</sup>	I <sup>1-3</sup>
Internally Flawless	Very Very Slightly Included	Very Slightly Included	Slightly Included	Included



**ADDITIONAL GRADING INFORMATION**

Polish **EXCELLENT**

Symmetry **EXCELLENT**

Fluorescence **NONE**

Inscription(s) **IGI LG649403430**

Comments: This Laboratory Grown Diamond was created by Chemical Vapor Deposition (CVD) growth process.  
Type IIa



**IGI**



October 1, 2024  
IGI Report No LG649403430  
PRINCESS CUT

7.55 X 7.54 X 5.36 MM

2.55 CARATS  
F

Carat Weight  
Color Grade  
Clarity Grade  
Depth  
Table  
Girdle  
Medium

Pointed  
EXCELLENT  
EXCELLENT  
NONE  
IGI LG649403430

Culet  
Polish  
Symmetry  
Fluorescence  
Inscription(s)

Comments: This Laboratory Grown Diamond was created by Chemical Vapor Deposition (CVD) growth process.  
Type IIa