



ELECTRONIC COPY

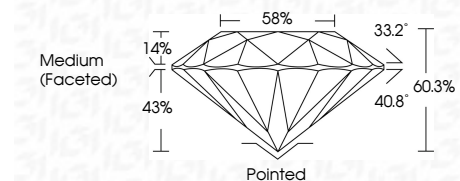
LG649403549
Report verification at igi.org



October 10, 2024
IGI Report Number **LG649403549**
Description **LABORATORY GROWN DIAMOND**
Shape and Cutting Style **ROUND BRILLIANT**
Measurements **8.19 - 8.24 X 4.96 MM**

GRADING RESULTS

Carat Weight **2.05 CARATS**
Color Grade **E**
Clarity Grade **VVS 2**
Cut Grade **IDEAL**



ADDITIONAL GRADING INFORMATION

Polish **EXCELLENT**
Symmetry **EXCELLENT**
Fluorescence **NONE**
Inscription(s) **IGI LG649403549**
Comments: This Laboratory Grown Diamond was created by Chemical Vapor Deposition (CVD) growth process. Type IIa



October 10, 2024	IGI Report No LG649403549	2.05 CARATS	E	VVS 2	IDEAL	60.3%	58%	Medium (Faceted)	Pointed	EXCELLENT	EXCELLENT	NONE	IGI LG649403549
8.19 - 8.24 X 4.96 MM	ROUND BRILLIANT	Carat Weight	Color Grade	Clarity Grade	Cut Grade	Depth	Table	Grade	Culet	Polish	Symmetry	Fluorescence	Inscription(s)

Comments: This Laboratory Grown Diamond was created by Chemical Vapor Deposition (CVD) growth process. Type IIa

October 10, 2024
IGI Report Number **LG649403549**
Description **LABORATORY GROWN DIAMOND**
Shape and Cutting Style **ROUND BRILLIANT**
Measurements **8.19 - 8.24 X 4.96 MM**

GRADING RESULTS

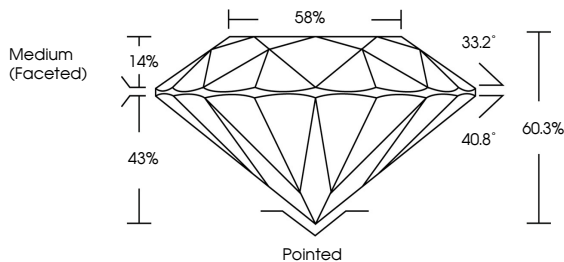
Carat Weight **2.05 CARATS**
Color Grade **E**
Clarity Grade **VVS 2**
Cut Grade **IDEAL**

ADDITIONAL GRADING INFORMATION

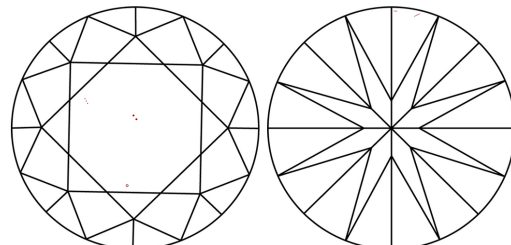
Polish **EXCELLENT**
Symmetry **EXCELLENT**
Fluorescence **NONE**
Inscription(s) **IGI LG649403549**

Comments: This Laboratory Grown Diamond was created by Chemical Vapor Deposition (CVD) growth process. Type IIa

PROPORTIONS

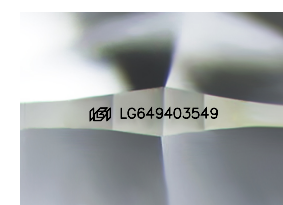


CLARITY CHARACTERISTICS



KEY TO SYMBOLS

Red symbols indicate internal characteristics.
Green symbols indicate external characteristics.



Sample Image Used

COLOR

D E F G H I J Faint Very Light Light

CLARITY

IF	VS ¹⁻²	VS ¹⁻²	SI ¹⁻²	I ¹⁻³
Internally Flawless	Very Very Slightly Included	Very Slightly Included	Slightly Included	Included

