



ELECTRONIC COPY

LABORATORY GROWN DIAMOND REPORT

LG649405813
Report verification at igi.org

LABORATORY GROWN DIAMOND REPORT

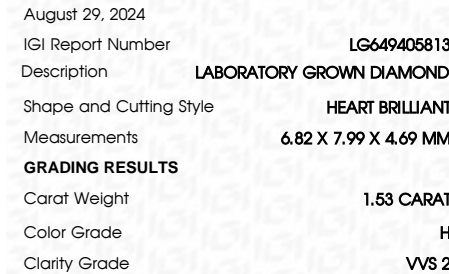


Diagram illustrating the dimensions of a diamond-shaped facet (likely a gemstone facet) with the following measurements:

- Top width: 61%
- Right height: 58.7%
- Top-left corner: 14.5%
- Bottom-left corner: 41%
- Bottom-right corner: 14.5%
- Bottom point: Pointed

Text on the left: Medium To Slightly Thick (Faceted)

ADDITIONAL GRADING INFORMATION

Polish	EXCELLENT
Symmetry	EXCELLENT
Fluorescence	NONE
Inscription(s)	 LG649405813

Comments: This Laboratory Grown Diamond was created by Chemical Vapor Deposition (CVD) growth process.
Type IIa



© IGI 2020, International Gemological Institute

FD - 10 20

www.igi.org

THIS DOCUMENT WAS PRODUCED WITH THE FOLLOWING SECURITY MEASURES: SPECIAL DOCUMENT PAPER, INK SCREENS, WATERMARK, BACKGROUND DESIGNS, HOLOGRAM AND OTHER SECURITY FEATURES NOT LISTED AND DO EXCEED DOCUMENT SECURITY INDUSTRY GUIDELINES

August 29, 2024	Corat Weight	Medium Thick	169 Lbs
GL Report No LC64905313	Color Grade	Quiet	Comments: The Laboratory Grown Diamond was analyzed by Chemical Vapor Deposition (CVD) growth process. type Iia
HEART BRILLIANT	Clarity Grade	Polish	
8.82 X 7.99 X 4.69 MM	Table	Symmetry	
	Grade	Fluorescence Inscription(s)	