



**ELECTRONIC COPY**

LG649406591  
Report verification at igi.org



September 24, 2024

IGI Report Number **LG649406591**

Description **LABORATORY GROWN DIAMOND**

Shape and Cutting Style **ROUND BRILLIANT**

Measurements **8.20 - 8.24 X 4.99 MM**

**GRADING RESULTS**

Carat Weight **2.04 CARATS**

Color Grade **H**

Clarity Grade **VS 1**

Cut Grade **IDEAL**

September 24, 2024  
IGI Report Number **LG649406591**  
Description **LABORATORY GROWN DIAMOND**  
Shape and Cutting Style **ROUND BRILLIANT**  
Measurements **8.20 - 8.24 X 4.99 MM**

**GRADING RESULTS**

Carat Weight **2.04 CARATS**

Color Grade **H**

Clarity Grade **VS 1**

Cut Grade **IDEAL**

**ADDITIONAL GRADING INFORMATION**

Polish **EXCELLENT**

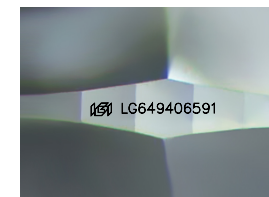
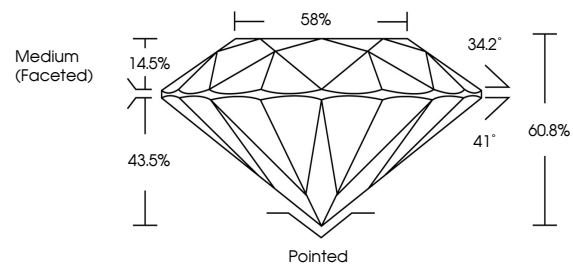
Symmetry **EXCELLENT**

Fluorescence **NONE**

Inscription(s) **LG649406591**

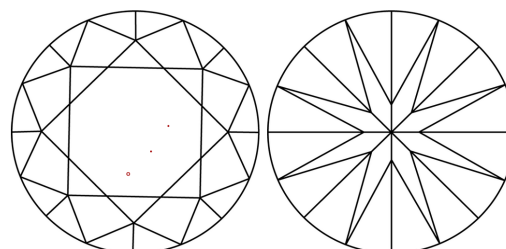
Comments: This Laboratory Grown Diamond was created by Chemical Vapor Deposition (CVD) growth process.  
Type IIa

**PROPORTIONS**



Sample Image Used

**CLARITY CHARACTERISTICS**



**KEY TO SYMBOLS**

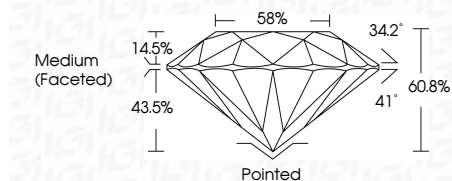
Red symbols indicate internal characteristics.  
Green symbols indicate external characteristics.

**COLOR**

D E F G H I J Faint Very Light Light

**CLARITY**

IF	VS <sup>1-2</sup>	VS <sup>1-2</sup>	SI <sup>1-2</sup>	I <sup>1-3</sup>
Internally Flawless	Very Very Slightly Included	Very Slightly Included	Slightly Included	Included



**ADDITIONAL GRADING INFORMATION**

Polish **EXCELLENT**

Symmetry **EXCELLENT**

Fluorescence **NONE**

Inscription(s) **LG649406591**

Comments: This Laboratory Grown Diamond was created by Chemical Vapor Deposition (CVD) growth process.  
Type IIa



**IGI**



September 24, 2024  
IGI Report No **LG649406591**  
**ROUND BRILLIANT**

**8.20 - 8.24 X 4.99 MM**

Carat Weight	<b>2.04 CARATS</b>
Color Grade	<b>H</b>
Clarity Grade	<b>VS 1</b>
Cut Grade	<b>IDEAL</b>
Depth	<b>60.8%</b>
Table	<b>58%</b>
Grade	<b>Medium (Faceted)</b>
Culet	<b>Pointed</b>
Polish	<b>EXCELLENT</b>
Symmetry	<b>EXCELLENT</b>
Fluorescence	<b>NONE</b>
Inscription(s)	<b>LG649406591</b>

Comments: This Laboratory Grown Diamond was created by Chemical Vapor Deposition (CVD) growth process.  
Type IIa