



ELECTRONIC COPY

LG649407394 Report verification at igi.org



August 25, 2024 IGI Report Number LG649407394 Description LABORATORY GROWN DIAMOND Shape and Cutting Style OVAL BRILLIANT Measurements 16.06 X 10.23 X 5.65 MM

GRADING RESULTS Carat Weight 6.11 CARATS Color Grade E Clarity Grade SI 1

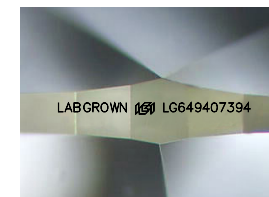
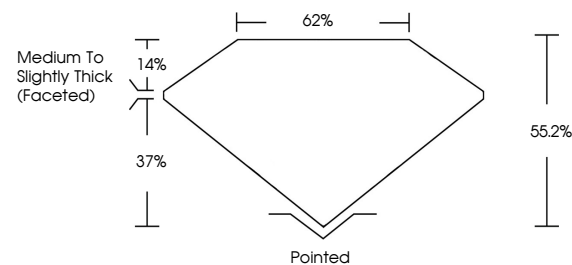
August 25, 2024 IGI Report Number LG649407394 Description LABORATORY GROWN DIAMOND Shape and Cutting Style OVAL BRILLIANT Measurements 16.06 X 10.23 X 5.65 MM

GRADING RESULTS Carat Weight 6.11 CARATS Color Grade E Clarity Grade SI 1

ADDITIONAL GRADING INFORMATION Polish EXCELLENT Symmetry EXCELLENT Fluorescence NONE Inscription(s) LABGROWN (IGI) LG649407394

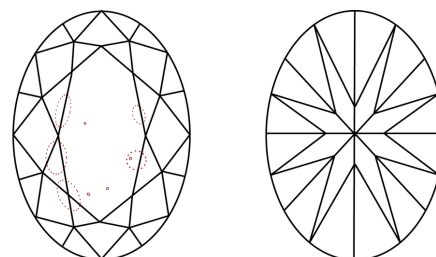
Comments: This Laboratory Grown Diamond was created by Chemical Vapor Deposition (CVD) growth process. Type IIa

PROPORTIONS



Sample Image Used

CLARITY CHARACTERISTICS



KEY TO SYMBOLS

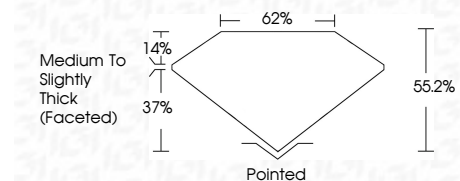
Red symbols indicate internal characteristics. Green symbols indicate external characteristics.

COLOR

D E F G H I J Faint Very Light Light

CLARITY

IF VS 1-2 VS 1-2 SI 1-2 I 1-3 Internally Flawless Very Very Slightly Included Very Slightly Included Slightly Included Included



ADDITIONAL GRADING INFORMATION

Polish EXCELLENT Symmetry EXCELLENT Fluorescence NONE Inscription(s) LABGROWN (IGI) LG649407394 Comments: This Laboratory Grown Diamond was created by Chemical Vapor Deposition (CVD) growth process. Type IIa



August 25, 2024 IGI Report No LG649407394 OVAL BRILLIANT 6.11 CARATS E SI 1 62% 62% Medium to Slightly Thick (Faceted) Pointed EXCELLENT EXCELLENT NONE LABGROWN (IGI) LG649407394 Comments: This Laboratory Grown Diamond was created by Chemical Vapor Deposition (CVD) growth process. Type IIa