



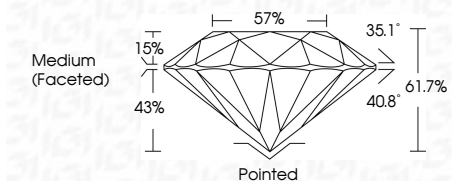
ELECTRONIC COPY

LG649407914
Report verification at igi.org



August 30, 2024
IGI Report Number LG649407914
Description LABORATORY GROWN DIAMOND
Shape and Cutting Style ROUND BRILLIANT
Measurements 8.40 - 8.45 X 5.19 MM

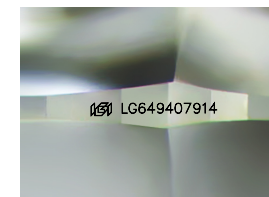
GRADING RESULTS
Carat Weight 2.26 CARATS
Color Grade E
Clarity Grade VS 1
Cut Grade IDEAL



ADDITIONAL GRADING INFORMATION
Polish EXCELLENT
Symmetry EXCELLENT
Fluorescence NONE
Inscription(s) IGI LG649407914
Comments: HEARTS & ARROWS
This Laboratory Grown Diamond was created by Chemical Vapor Deposition (CVD) growth process. Type IIa

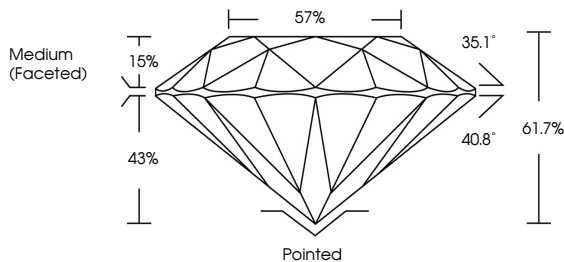


August 30, 2024
IGI Report No LG649407914
ROUND BRILLIANT
8.40 - 8.45 X 5.19 MM
2.26 CARATS E
VS 1 IDEAL
61.7% 57%
Medium (Faceted)
Pointed EXCELLENT
EXCELLENT
NONE
IGI LG649407914
Comments: HEARTS & ARROWS
This Laboratory Grown Diamond was created by Chemical Vapor Deposition (CVD) growth process. Type IIa

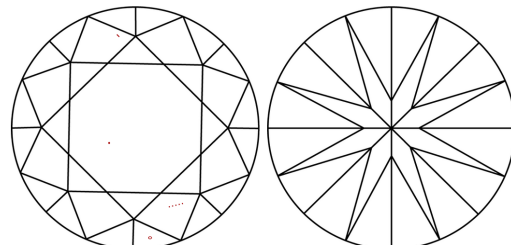


Sample Image Used

PROPORTIONS



CLARITY CHARACTERISTICS



KEY TO SYMBOLS
Red symbols indicate internal characteristics.
Green symbols indicate external characteristics.



COLOR

Color scale table with categories D, E, F, G, H, I, J, Faint, Very Light, Light.

CLARITY

Clarity scale table with categories IF, VS 1-2, VS 1-2, SI 1-2, I 1-3, Internally Flawless, Very Very Slightly Included, Very Slightly Included, Slightly Included, Included.



August 30, 2024
IGI Report Number LG649407914
Description LABORATORY GROWN DIAMOND
Shape and Cutting Style ROUND BRILLIANT
Measurements 8.40 - 8.45 X 5.19 MM

GRADING RESULTS
Carat Weight 2.26 CARATS
Color Grade E
Clarity Grade VS 1
Cut Grade IDEAL

ADDITIONAL GRADING INFORMATION
Polish EXCELLENT
Symmetry EXCELLENT
Fluorescence NONE
Inscription(s) IGI LG649407914

Comments: HEARTS & ARROWS
This Laboratory Grown Diamond was created by Chemical Vapor Deposition (CVD) growth process. Type IIa