



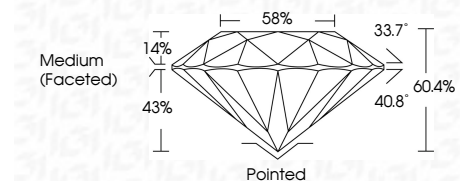
ELECTRONIC COPY

LG649409759 Report verification at igi.org



August 29, 2024 IGI Report Number LG649409759 Description LABORATORY GROWN DIAMOND Shape and Cutting Style ROUND BRILLIANT Measurements 8.27 - 8.29 X 5.00 MM

GRADING RESULTS Carat Weight 2.09 CARATS Color Grade E Clarity Grade VVS 2 Cut Grade IDEAL



ADDITIONAL GRADING INFORMATION Polish EXCELLENT Symmetry EXCELLENT Fluorescence NONE Inscription(s) IGI LG649409759 Comments: This Laboratory Grown Diamond was created by Chemical Vapor Deposition (CVD) growth process. Type IIa



August 29, 2024 IGI Report No LG649409759 ROUND BRILLIANT 8.27 - 8.29 X 5.00 MM 2.09 CARATS E VVS 2 IDEAL 60.4% 58% Medium (Faceted) Pointed EXCELLENT EXCELLENT NONE IGI LG649409759 Comments: This Laboratory Grown Diamond was created by Chemical Vapor Deposition (CVD) growth process. Type IIa

LABORATORY GROWN DIAMOND REPORT

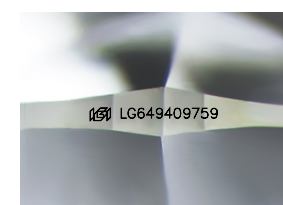
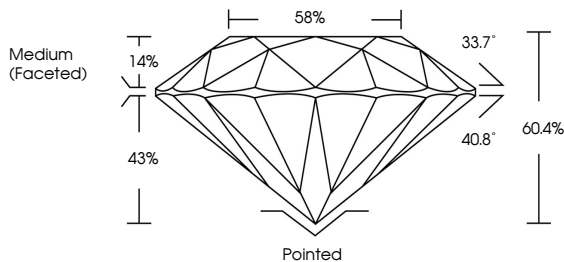
August 29, 2024 IGI Report Number LG649409759 Description LABORATORY GROWN DIAMOND Shape and Cutting Style ROUND BRILLIANT Measurements 8.27 - 8.29 X 5.00 MM

GRADING RESULTS Carat Weight 2.09 CARATS Color Grade E Clarity Grade VVS 2 Cut Grade IDEAL

ADDITIONAL GRADING INFORMATION Polish EXCELLENT Symmetry EXCELLENT Fluorescence NONE Inscription(s) IGI LG649409759

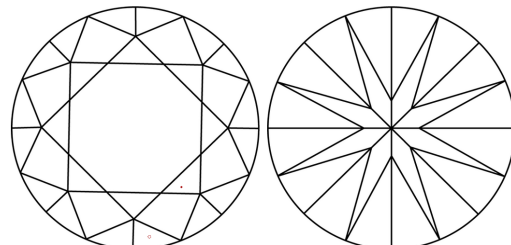
Comments: This Laboratory Grown Diamond was created by Chemical Vapor Deposition (CVD) growth process. Type IIa

PROPORTIONS



Sample Image Used

CLARITY CHARACTERISTICS



KEY TO SYMBOLS Red symbols indicate internal characteristics. Green symbols indicate external characteristics.

COLOR table with categories D, E, F, G, H, I, J, Faint, Very Light, Light

CLARITY table with categories IF, VVS 1-2, VS 1-2, SI 1-2, I 1-3, Internally Flawless, Very Very Slightly Included, Very Slightly Included, Slightly Included, Included

