



ELECTRONIC COPY

LG649411323
Report verification at igi.org



September 7, 2024
IGI Report Number **LG649411323**
Description **LABORATORY GROWN DIAMOND**
Shape and Cutting Style **ROUND BRILLIANT**
Measurements **11.64 - 11.70 X 6.93 MM**
GRADING RESULTS
Carat Weight **5.67 CARATS**
Color Grade **G**
Clarity Grade **VS 1**
Cut Grade **EXCELLENT**

September 7, 2024
IGI Report Number **LG649411323**
Description **LABORATORY GROWN DIAMOND**
Shape and Cutting Style **ROUND BRILLIANT**
Measurements **11.64 - 11.70 X 6.93 MM**

GRADING RESULTS

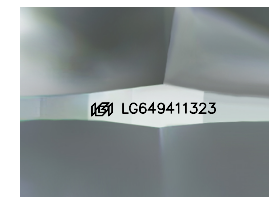
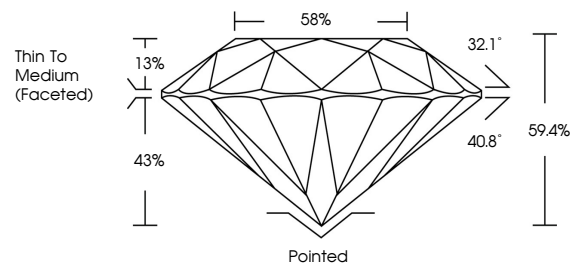
Carat Weight **5.67 CARATS**
Color Grade **G**
Clarity Grade **VS 1**
Cut Grade **EXCELLENT**

ADDITIONAL GRADING INFORMATION

Polish **EXCELLENT**
Symmetry **EXCELLENT**
Fluorescence **NONE**
Inscription(s) **IGI LG649411323**

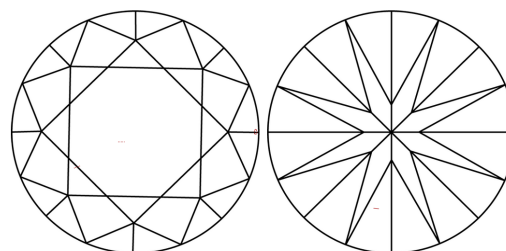
Comments: This Laboratory Grown Diamond was created by Chemical Vapor Deposition (CVD) growth process.
Type IIa

PROPORTIONS



Sample Image Used

CLARITY CHARACTERISTICS



KEY TO SYMBOLS

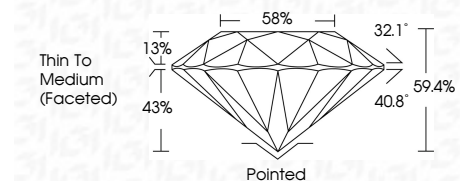
Red symbols indicate internal characteristics.
Green symbols indicate external characteristics.

COLOR

D E F G H I J Faint Very Light Light

CLARITY

IF	VS ¹⁻²	VS ¹⁻²	SI ¹⁻²	I ¹⁻³
Internally Flawless	Very Very Slightly Included	Very Slightly Included	Slightly Included	Included



ADDITIONAL GRADING INFORMATION

Polish **EXCELLENT**
Symmetry **EXCELLENT**
Fluorescence **NONE**
Inscription(s) **IGI LG649411323**
Comments: This Laboratory Grown Diamond was created by Chemical Vapor Deposition (CVD) growth process.
Type IIa



IGI



September 7, 2024
IGI Report No LG649411323
ROUND BRILLIANT
11.64 - 11.70 X 6.93 MM
5.67 CARATS
Color Grade **G**
Clarity Grade **VS 1**
Depth **59.4%**
Table **58%**
Girdle **Thin To Medium (Faceted)**
Culet **Pointed**
Polish **EXCELLENT**
Symmetry **EXCELLENT**
Fluorescence **NONE**
Inscriptions(s) **IGI LG649411323**
Comments: This Laboratory Grown Diamond was created by Chemical Vapor Deposition (CVD) growth process.
Type IIa