



ELECTRONIC COPY

LG649411964 Report verification at igi.org



August 24, 2024 IGI Report Number LG649411964 Description LABORATORY GROWN DIAMOND Shape and Cutting Style ROUND BRILLIANT Measurements 11.33 - 11.38 X 6.95 MM GRADING RESULTS Carat Weight 5.52 CARATS Color Grade E Clarity Grade VS 1 Cut Grade IDEAL

LABORATORY GROWN DIAMOND REPORT

August 24, 2024 IGI Report Number LG649411964 Description LABORATORY GROWN DIAMOND Shape and Cutting Style ROUND BRILLIANT Measurements 11.33 - 11.38 X 6.95 MM

GRADING RESULTS

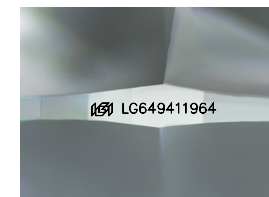
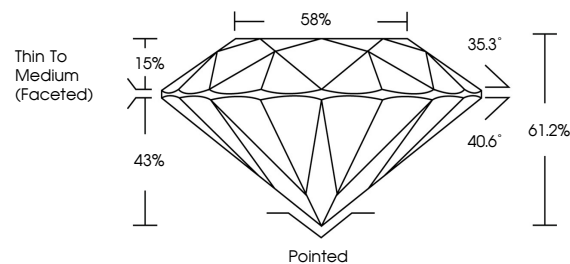
Carat Weight 5.52 CARATS Color Grade E Clarity Grade VS 1 Cut Grade IDEAL

ADDITIONAL GRADING INFORMATION

Polish EXCELLENT Symmetry EXCELLENT Fluorescence NONE Inscription(s) IGI LG649411964

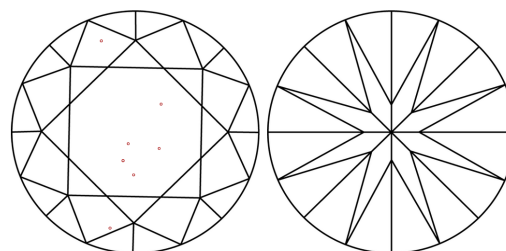
Comments: This Laboratory Grown Diamond was created by Chemical Vapor Deposition (CVD) growth process. Type IIa

PROPORTIONS



Sample Image Used

CLARITY CHARACTERISTICS



KEY TO SYMBOLS

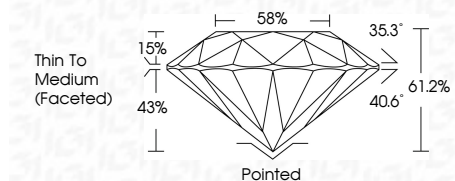
Red symbols indicate internal characteristics. Green symbols indicate external characteristics.

COLOR

D E F G H I J Faint Very Light Light

CLARITY

IF WS 1-2 VS 1-2 SI 1-2 I 1-3 Internally Flawless Very Very Slightly Included Very Slightly Included Slightly Included Included



ADDITIONAL GRADING INFORMATION

Polish EXCELLENT Symmetry EXCELLENT Fluorescence NONE Inscription(s) IGI LG649411964 Comments: This Laboratory Grown Diamond was created by Chemical Vapor Deposition (CVD) growth process. Type IIa



Summary of report details including date, report number, diamond description, measurements, grading results, and additional information.