



**INTERNATIONAL
GEMOLOGICAL
INSTITUTE**

ELECTRONIC COPY

LG649412001

LABORATORY GROWN DIAMOND REPORT

August 30, 2024
 IGI Report Number **LG649412001**
 Description **LABORATORY GROWN DIAMOND**
 Shape and Cutting Style **ROUND BRILLIANT**
 Measurements **6.35 - 6.40 X 3.95 MM**

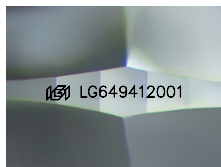
GRADING RESULTS

Carat Weight **0.99 CARAT**
 Color Grade **FANCY INTENSE PINK**
 Clarity Grade **VVS 1**
 Cut Grade **EXCELLENT**

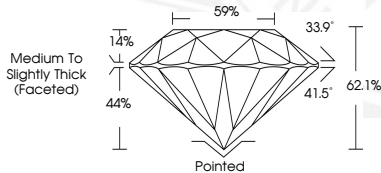
ADDITIONAL GRADING INFORMATION

Polish **EXCELLENT**
 Symmetry **EXCELLENT**
 Fluorescence **SLIGHT**
 Inscription(s) **IGI LG649412001**

Comments: This Laboratory Grown Diamond was created by High Pressure High Temperature (HPHT) growth process. Indications of post-growth treatment.



Sample Image Used



August 30, 2024
 IGI Report Number **LG649412001**
 ROUND BRILLIANT
 LABORATORY GROWN DIAMOND
 6.35 - 6.40 X 3.95 MM
 Carat Weight **0.99 CARAT**
 Color Grade **FANCY INTENSE PINK**
 Clarity Grade **VVS 1**
 Cut Grade **EXCELLENT**
 Polish **EXCELLENT**
 Symmetry **EXCELLENT**
 Fluorescence **SLIGHT**
 Inscription(s) **IGI LG649412001**

Comments: This Laboratory Grown Diamond was created by High Pressure High Temperature (HPHT) growth process. Indications of post-growth treatment.



August 30, 2024
 IGI Report Number **LG649412001**
 ROUND BRILLIANT
 LABORATORY GROWN DIAMOND
 6.35 - 6.40 X 3.95 MM
 Carat Weight **0.99 CARAT**
 Color Grade **FANCY INTENSE PINK**
 Clarity Grade **VVS 1**
 Cut Grade **EXCELLENT**
 Polish **EXCELLENT**
 Symmetry **EXCELLENT**
 Fluorescence **SLIGHT**
 Inscription(s) **IGI LG649412001**

Comments: This Laboratory Grown Diamond was created by High Pressure High Temperature (HPHT) growth process. Indications of post-growth treatment.

THIS DOCUMENT WAS PRODUCED WITH THE FOLLOWING SECURITY MEASURES: SPECIAL DOCUMENT PAPER, PINK SCREENS, WATERMARK, BACKGROUND DESIGNS, HOLOGRAM AND OTHER SECURITY FEATURES NOT LISTED AND DO EXCEED DOCUMENT SECURITY INDUSTRY GUIDELINES.

For terms & conditions and to verify this report, please visit www.igi.org