



ELECTRONIC COPY

LG649412735
Report verification at igi.org



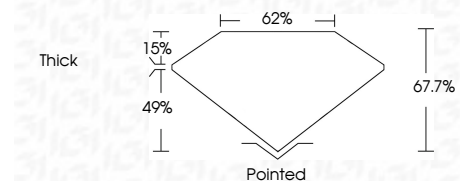
September 4, 2024
IGI Report Number **LG649412735**
Description **LABORATORY GROWN DIAMOND**

Shape and Cutting Style **CUT CORNERED
RECTANGULAR MODIFIED
BRILLIANT**

Measurements **8.41 X 6.07 X 4.11 MM**

GRADING RESULTS

Carat Weight **2.00 CARATS**
Color Grade **FANCY VIVID PINK**
Clarity Grade **VVS 2**



ADDITIONAL GRADING INFORMATION

Polish **EXCELLENT**
Symmetry **EXCELLENT**
Fluorescence **SLIGHT**
Inscription(s) **IGI LG649412735**

Comments: This Laboratory Grown Diamond was created by Chemical Vapor Deposition (CVD) growth process. Indications of post-growth treatment.



September 4, 2024
IGI Report No LG649412735
CUT CORNERED RECT. MODIFIED BRILLIANT
8.41 X 6.07 X 4.11 MM
2.00 CARATS
FANCY VIVID PINK
VVS 2
67.7%
62%
Thick
Pointed
EXCELLENT
EXCELLENT
SLIGHT
IGI LG649412735
Comments: This Laboratory Grown Diamond was created by Chemical Vapor Deposition (CVD) growth process. Indications of post-growth treatment.

LABORATORY GROWN DIAMOND REPORT

September 4, 2024
IGI Report Number **LG649412735**
Description **LABORATORY GROWN DIAMOND**
Shape and Cutting Style **CUT CORNERED RECTANGULAR
MODIFIED BRILLIANT**
Measurements **8.41 X 6.07 X 4.11 MM**

GRADING RESULTS

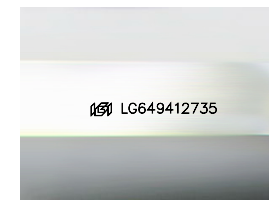
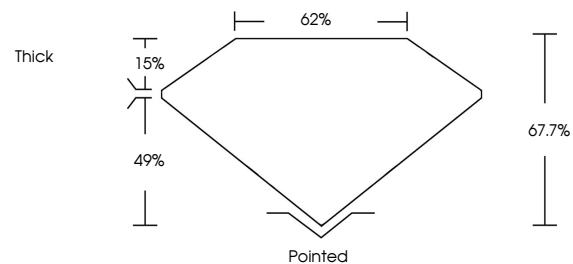
Carat Weight **2.00 CARATS**
Color Grade **FANCY VIVID PINK**
Clarity Grade **VVS 2**

ADDITIONAL GRADING INFORMATION

Polish **EXCELLENT**
Symmetry **EXCELLENT**
Fluorescence **SLIGHT**
Inscription(s) **IGI LG649412735**

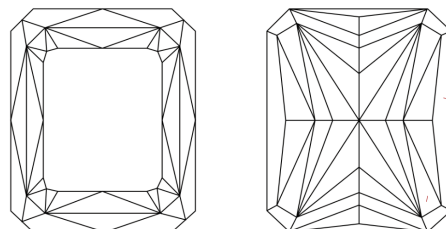
Comments: This Laboratory Grown Diamond was created by Chemical Vapor Deposition (CVD) growth process. Indications of post-growth treatment.

PROPORTIONS



Sample Image Used

CLARITY CHARACTERISTICS



KEY TO SYMBOLS

Red symbols indicate internal characteristics.
Green symbols indicate external characteristics.

COLOR

D E F G H I J Faint Very Light Light

CLARITY

IF VS¹⁻² VS¹⁻² SI¹⁻² I¹⁻³

Internally Flawless Very Very Slightly Included Very Slightly Included Slightly Included Included

