



ELECTRONIC COPY

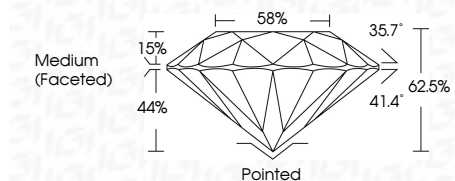
LG649412740 Report verification at igi.org



September 3, 2024 IGI Report Number LG649412740 Description LABORATORY GROWN DIAMOND Shape and Cutting Style ROUND BRILLIANT Measurements 6.50 - 6.52 X 4.07 MM

GRADING RESULTS

Carat Weight 1.07 CARAT Color Grade FANCY VIVID BLUE Clarity Grade VS 2 Cut Grade IDEAL

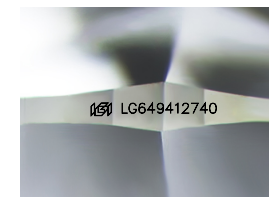


ADDITIONAL GRADING INFORMATION

Polish EXCELLENT Symmetry EXCELLENT Fluorescence NONE Inscription(s) IGI LG649412740 Comments: This Laboratory Grown Diamond was created by Chemical Vapor Deposition (CVD) growth process. Indications of post-growth treatment.

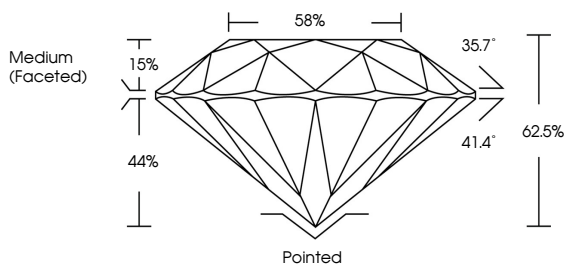


September 3, 2024 IGI Report No LG649412740 ROUND BRILLIANT 6.50 - 6.52 X 4.07 MM 1.07 CARAT FANCY VIVID BLUE VS 2 IDEAL 62.5% 58% Medium (Faceted) Pointed EXCELLENT EXCELLENT NONE IGI LG649412740 Comments: This Laboratory Grown Diamond was created by Chemical Vapor Deposition (CVD) growth process. Indications of post-growth treatment.

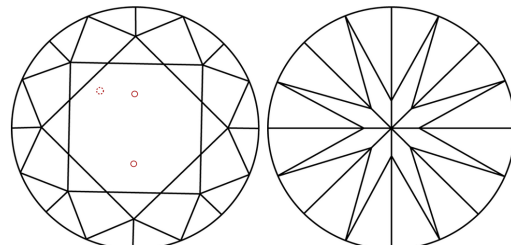


Sample Image Used

PROPORTIONS



CLARITY CHARACTERISTICS



KEY TO SYMBOLS Red symbols indicate internal characteristics. Green symbols indicate external characteristics.

COLOR

Color scale table with categories D, E, F, G, H, I, J, Faint, Very Light, Light

CLARITY

Clarity scale table with categories IF, VS 1-2, VS 1-2, SI 1-2, I 1-3, Internally Flawless, Very Very Slightly Included, Very Slightly Included, Slightly Included, Included

