



ELECTRONIC COPY

LG649413852
Report verification at igi.org



September 6, 2024
IGI Report Number **LG649413852**
Description **LABORATORY GROWN DIAMOND**
Shape and Cutting Style **CUSHION MODIFIED BRILLIANT**
Measurements **7.58 X 5.03 X 2.85 MM**
GRADING RESULTS
Carat Weight **1.00 CARAT**
Color Grade **FANCY INTENSE GREYISH YELLOW**
Clarity Grade **VS 1**

LABORATORY GROWN DIAMOND REPORT

September 6, 2024
IGI Report Number **LG649413852**
Description **LABORATORY GROWN DIAMOND**
Shape and Cutting Style **CUSHION MODIFIED BRILLIANT**
Measurements **7.58 X 5.03 X 2.85 MM**

GRADING RESULTS

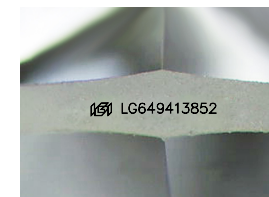
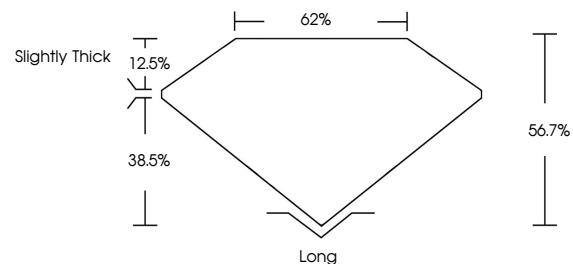
Carat Weight **1.00 CARAT**
Color Grade **FANCY INTENSE GREYISH YELLOW**
Clarity Grade **VS 1**

ADDITIONAL GRADING INFORMATION

Polish **EXCELLENT**
Symmetry **EXCELLENT**
Fluorescence **VERY SLIGHT**
Inscription(s) **LG649413852**

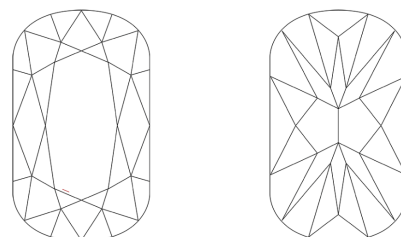
Comments: This Laboratory Grown Diamond was created by Chemical Vapor Deposition (CVD) growth process. Indications of post-growth treatment.

PROPORTIONS



Sample Image Used

CLARITY CHARACTERISTICS



KEY TO SYMBOLS

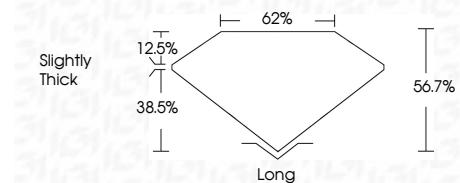
Red symbols indicate internal characteristics.
Green symbols indicate external characteristics.

COLOR

D E F G H I J Faint Very Light Light

CLARITY

IF	VS ¹⁻²	VS ¹⁻²	SI ¹⁻²	I ¹⁻³
Internally Flawless	Very Very Slightly Included	Very Slightly Included	Slightly Included	Included



ADDITIONAL GRADING INFORMATION

Polish **EXCELLENT**
Symmetry **EXCELLENT**
Fluorescence **VERY SLIGHT**
Inscription(s) **LG649413852**
Comments: This Laboratory Grown Diamond was created by Chemical Vapor Deposition (CVD) growth process. Indications of post-growth treatment.



IGI



September 6, 2024
IGI Report No. LG649413852
CUSHION MODIFIED BRILLIANT
1.00 CARAT
Carat Weight
FANCY INTENSE GREYISH YELLOW
Color Grade
VS 1
Clarity Grade
7.58 X 5.03 X 2.85 MM
Depth
56.7%
Table
62%
Girdle
Slightly Thick
Culet
Long
Polish
EXCELLENT
Symmetry
EXCELLENT
Fluorescence
VERY SLIGHT
Inscription(s)
 LG649413852
Comments: This Laboratory Grown Diamond was created by Chemical Vapor Deposition (CVD) growth process. Indications of post-growth treatment.