



**ELECTRONIC COPY**

LG649413879  
Report verification at igi.org



September 5, 2024  
IGI Report Number **LG649413879**  
Description **LABORATORY GROWN DIAMOND**  
Shape and Cutting Style **EMERALD CUT**  
Measurements **8.68 X 6.38 X 4.46 MM**  
**GRADING RESULTS**  
Carat Weight **2.52 CARATS**  
Color Grade **FANCY INTENSE BLUE**  
Clarity Grade **VVS 2**

**LABORATORY GROWN DIAMOND REPORT**

September 5, 2024  
IGI Report Number **LG649413879**  
Description **LABORATORY GROWN DIAMOND**  
Shape and Cutting Style **EMERALD CUT**  
Measurements **8.68 X 6.38 X 4.46 MM**

**GRADING RESULTS**

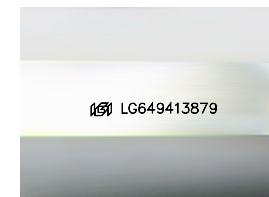
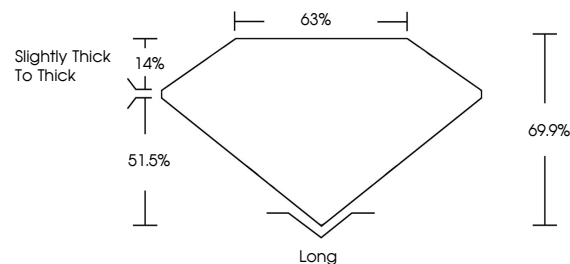
Carat Weight **2.52 CARATS**  
Color Grade **FANCY INTENSE BLUE**  
Clarity Grade **VVS 2**

**ADDITIONAL GRADING INFORMATION**

Polish **EXCELLENT**  
Symmetry **EXCELLENT**  
Fluorescence **NONE**  
Inscription(s) **LG649413879**

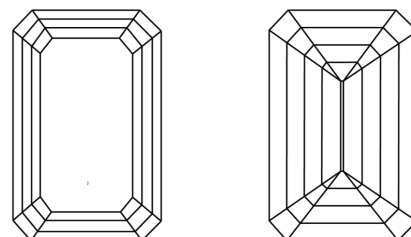
Comments: This Laboratory Grown Diamond was created by Chemical Vapor Deposition (CVD) growth process.  
Indications of post-growth treatment.

**PROPORTIONS**



Sample Image Used

**CLARITY CHARACTERISTICS**



**KEY TO SYMBOLS**

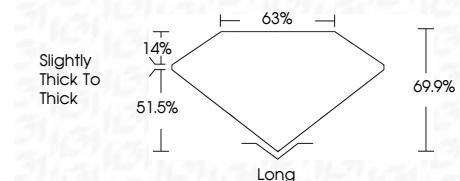
Red symbols indicate internal characteristics.  
Green symbols indicate external characteristics.

**COLOR**

D E F G H I J Faint Very Light Light

**CLARITY**

| IF                  | VS <sup>1-2</sup>           | VS <sup>1-2</sup>      | SI <sup>1-2</sup> | I <sup>1-3</sup> |
|---------------------|-----------------------------|------------------------|-------------------|------------------|
| Internally Flawless | Very Very Slightly Included | Very Slightly Included | Slightly Included | Included         |



**ADDITIONAL GRADING INFORMATION**

Polish **EXCELLENT**  
Symmetry **EXCELLENT**  
Fluorescence **NONE**  
Inscription(s) **LG649413879**  
Comments: This Laboratory Grown Diamond was created by Chemical Vapor Deposition (CVD) growth process.  
Indications of post-growth treatment.



September 5, 2024  
IGI Report No **LG649413879**  
**EMERALD CUT**  
**8.68 X 6.38 X 4.46 MM**  
Carat Weight **2.52 CARATS**  
Color Grade **FANCY INTENSE BLUE**  
Clarity Grade **VVS 2**  
Depth **69.9%**  
Table **63%**  
Girdle **Slightly thick to Thick**  
Culet **Long**  
Polish **EXCELLENT**  
Symmetry **EXCELLENT**  
Fluorescence **NONE**  
Inscription(s) **LG649413879**  
Comments: This Laboratory Grown Diamond was created by Chemical Vapor Deposition (CVD) growth process.  
Indications of post-growth treatment.