



**ELECTRONIC COPY**

LG649414407  
Report verification at igi.org



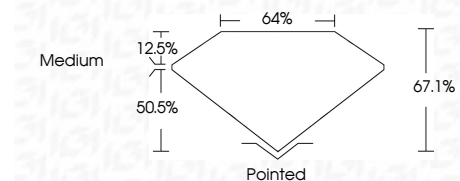
August 24, 2024  
IGI Report Number **LG649414407**  
Description **LABORATORY GROWN DIAMOND**

Shape and Cutting Style **CUT CORNERED  
RECTANGULAR MODIFIED  
BRILLIANT**

Measurements **11.74 X 8.51 X 5.71 MM**

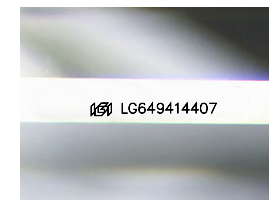
**GRADING RESULTS**

Carat Weight **4.95 CARATS**  
Color Grade **F**  
Clarity Grade **VVS 2**



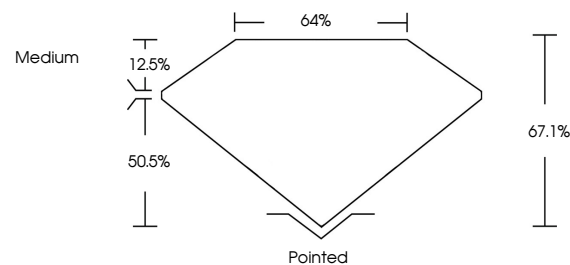
**ADDITIONAL GRADING INFORMATION**

Polish **EXCELLENT**  
Symmetry **EXCELLENT**  
Fluorescence **NONE**  
Inscription(s) **(IGI) LG649414407**  
Comments: This Laboratory Grown Diamond was created by Chemical Vapor Deposition (CVD) growth process. Type IIa

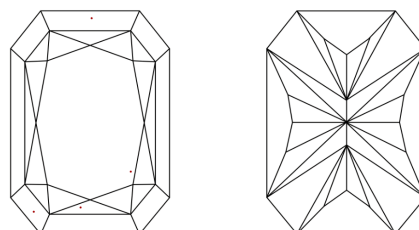


Sample Image Used

**PROPORTIONS**



**CLARITY CHARACTERISTICS**



**KEY TO SYMBOLS**

Red symbols indicate internal characteristics.  
Green symbols indicate external characteristics.

**COLOR**

D E F G H I J Faint Very Light Light

**CLARITY**

IF	VVS <sup>1-2</sup>	VS <sup>1-2</sup>	SI <sup>1-2</sup>	I <sup>1-3</sup>
Internally Flawless	Very Very Slightly Included	Very Slightly Included	Slightly Included	Included



August 24, 2024  
IGI Report No LG649414407  
CUT CORNERED RECT. MODIFIED BRILLIANT  
4.95 CARATS  
F  
VVS 2  
67.1%  
50.5%  
Medium  
Pointed  
EXCELLENT  
EXCELLENT  
NONE  
(IGI) LG649414407  
Comments: This Laboratory Grown Diamond was created by Chemical Vapor Deposition (CVD) growth process. Type IIa