



ELECTRONIC COPY

LG649415828
Report verification at igi.org



August 28, 2024

IGI Report Number **LG649415828**

Description **LABORATORY GROWN DIAMOND**

Shape and Cutting Style **ROUND BRILLIANT**

Measurements **6.43 - 6.45 X 3.99 MM**

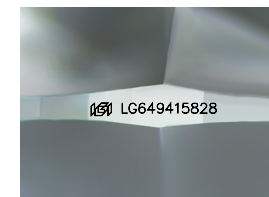
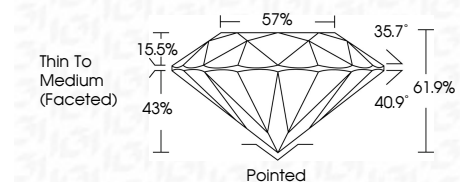
GRADING RESULTS

Carat Weight **1.01 CARAT**

Color Grade **D**

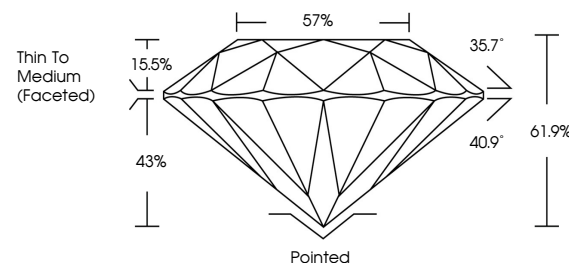
Clarity Grade **VVS 2**

Cut Grade **IDEAL**

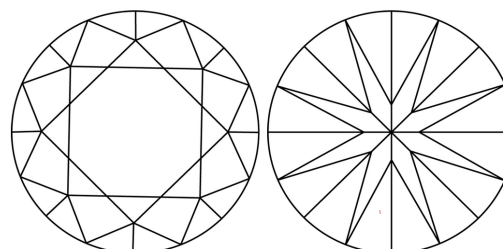


Sample Image Used

PROPORTIONS



CLARITY CHARACTERISTICS



KEY TO SYMBOLS

Red symbols indicate internal characteristics.
Green symbols indicate external characteristics.

COLOR

D E F G H I J Faint Very Light Light

CLARITY

IF VS¹⁻² VS¹⁻² SI¹⁻² I¹⁻³

Internally Flawless Very Very Slightly Included Very Slightly Included Slightly Included Included

ADDITIONAL GRADING INFORMATION

Polish **EXCELLENT**

Symmetry **EXCELLENT**

Fluorescence **NONE**

Inscription(s) **IGI LG649415828**

Comments: As Grown - No indication of post-growth treatment.

This Laboratory Grown Diamond was created by High Pressure High Temperature (HPHT) growth process. Type II



IGI



August 28, 2024
IGI Report No LG649415828
ROUND BRILLIANT
6.43 - 6.45 X 3.99 MM
Carat Weight 1.01 CARAT
Color Grade D
Clarity Grade VVS 2
Cut Grade IDEAL
Depth 61.9%
Table 57%
Girdle Thin To Medium (Faceted)
Culet Pointed
Polish EXCELLENT
Symmetry EXCELLENT
Fluorescence NONE
Inscriptions(s) IGI LG649415828
Comments: As Grown - No indication of post-growth treatment.
This Laboratory Grown Diamond was created by High Pressure High Temperature (HPHT) growth process. Type II