



ELECTRONIC COPY

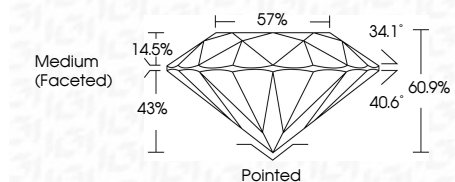
LG649416275 Report verification at igi.org



August 29, 2024 IGI Report Number LG649416275 Description LABORATORY GROWN DIAMOND Shape and Cutting Style ROUND BRILLIANT Measurements 7.36 - 7.42 X 4.50 MM

GRADING RESULTS

Carat Weight 1.51 CARAT Color Grade D Clarity Grade VVS 2 Cut Grade IDEAL



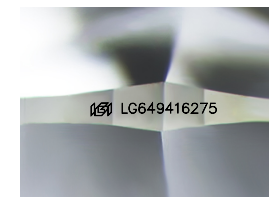
ADDITIONAL GRADING INFORMATION

Polish EXCELLENT Symmetry EXCELLENT Fluorescence NONE Inscription(s) IGI LG649416275 Comments: As Grown - No indication of post-growth treatment. This Laboratory Grown Diamond was created by High Pressure High Temperature (HPHT) growth process. Type II



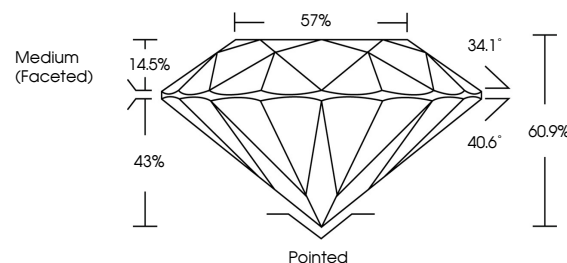
IGI

August 29, 2024 IGI Report No LG649416275 ROUND BRILLIANT 7.36 - 7.42 X 4.50 MM 1.51 CARAT D VVS 2 IDEAL 60.9% 57% Medium (Faceted) Pointed EXCELLENT EXCELLENT NONE IGI LG649416275 Comments: As Grown - No indication of post-growth treatment. This Laboratory Grown Diamond was created by High Pressure High Temperature (HPHT) growth process. Type II

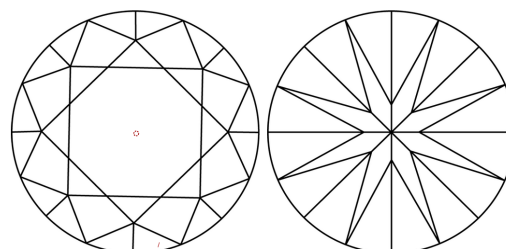


Sample Image Used

PROPORTIONS



CLARITY CHARACTERISTICS



KEY TO SYMBOLS

Red symbols indicate internal characteristics. Green symbols indicate external characteristics.

COLOR

D E F G H I J Faint Very Light Light

CLARITY

IF VVS 1-2 VS 1-2 SI 1-2 I 1-3 Internally Flawless Very Very Slightly Included Very Slightly Included Slightly Included Included

