



ELECTRONIC COPY

LG649416723 Report verification at igi.org



August 24, 2024 IGI Report Number LG649416723 Description LABORATORY GROWN DIAMOND

Shape and Cutting Style CUT CORNERED RECTANGULAR MODIFIED BRILLIANT

Measurements 8.10 X 5.57 X 3.66 MM

GRADING RESULTS

Carat Weight 1.42 CARAT Color Grade D Clarity Grade VS 1

LABORATORY GROWN DIAMOND REPORT

August 24, 2024 IGI Report Number LG649416723 Description LABORATORY GROWN DIAMOND Shape and Cutting Style CUT CORNERED RECTANGULAR MODIFIED BRILLIANT Measurements 8.10 X 5.57 X 3.66 MM

GRADING RESULTS

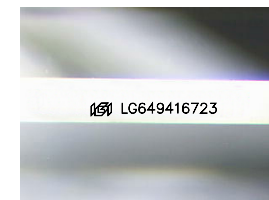
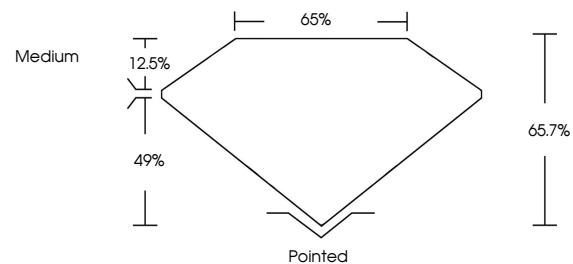
Carat Weight 1.42 CARAT Color Grade D Clarity Grade VS 1

ADDITIONAL GRADING INFORMATION

Polish EXCELLENT Symmetry EXCELLENT Fluorescence NONE Inscription(s) LG649416723

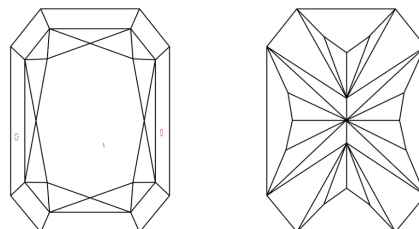
Comments: This Laboratory Grown Diamond was created by Chemical Vapor Deposition (CVD) growth process. Type IIa

PROPORTIONS



Sample Image Used

CLARITY CHARACTERISTICS



KEY TO SYMBOLS

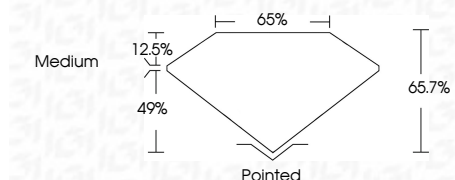
Red symbols indicate internal characteristics. Green symbols indicate external characteristics.

COLOR

D E F G H I J Faint Very Light Light

CLARITY

IF VS 1-2 VS 1-2 SI 1-2 I 1-3 Internally Flawless Very Very Slightly Included Very Slightly Included Slightly Included Included



ADDITIONAL GRADING INFORMATION

Polish EXCELLENT Symmetry EXCELLENT Fluorescence NONE Inscription(s) LG649416723 Comments: This Laboratory Grown Diamond was created by Chemical Vapor Deposition (CVD) growth process. Type IIa



August 24, 2024 IGI Report No LG649416723 CUT CORNERED RECT. MODIFIED BRILLIANT 8.10 X 5.57 X 3.66 MM 1.42 CARAT D VS 1 65.7% 65% Medium Pointed EXCELLENT EXCELLENT NONE LG649416723 Comments: This Laboratory Grown Diamond was created by Chemical Vapor Deposition (CVD) growth process. Type IIa