



ELECTRONIC COPY

LG649417792
Report verification at igi.org



September 24, 2024

IGI Report Number LG649417792

Description LABORATORY GROWN DIAMOND

Shape and Cutting Style ROUND BRILLIANT

Measurements 10.88 - 10.92 X 6.72 MM

GRADING RESULTS

Carat Weight 5.02 CARATS

Color Grade D

Clarity Grade VS 1

Cut Grade EXCELLENT

September 24, 2024
IGI Report Number LG649417792
Description LABORATORY GROWN DIAMOND
Shape and Cutting Style ROUND BRILLIANT
Measurements 10.88 - 10.92 X 6.72 MM

GRADING RESULTS

Carat Weight 5.02 CARATS

Color Grade D

Clarity Grade VS 1

Cut Grade EXCELLENT

ADDITIONAL GRADING INFORMATION

Polish EXCELLENT

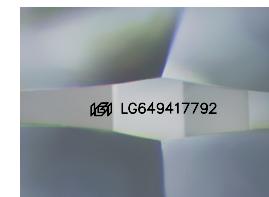
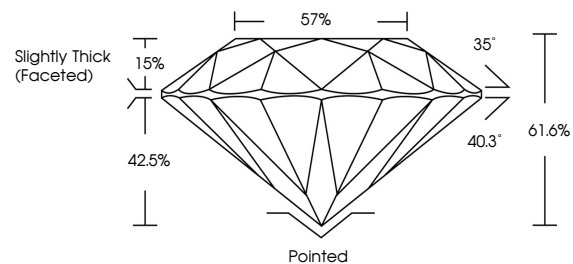
Symmetry EXCELLENT

Fluorescence NONE

Inscription(s) IGI LG649417792

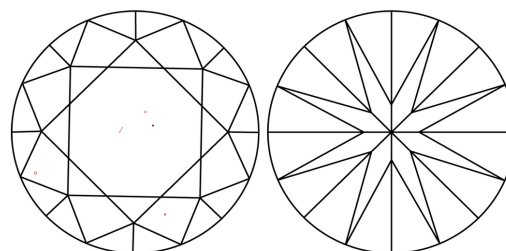
Comments: This Laboratory Grown Diamond was created by Chemical Vapor Deposition (CVD) growth process. Type IIa

PROPORTIONS



Sample Image Used

CLARITY CHARACTERISTICS



KEY TO SYMBOLS

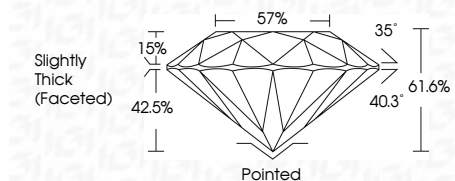
Red symbols indicate internal characteristics.
Green symbols indicate external characteristics.

COLOR

D E F G H I J Faint Very Light Light

CLARITY

IF VS 1-2 VS 1-2 SI 1-2 I 1-3
Internally Flawless Very Very Slightly Included Very Slightly Included Slightly Included Included



ADDITIONAL GRADING INFORMATION

Polish EXCELLENT

Symmetry EXCELLENT

Fluorescence NONE

Inscription(s) IGI LG649417792

Comments: This Laboratory Grown Diamond was created by Chemical Vapor Deposition (CVD) growth process. Type IIa



IGI



Vertical text block containing report details: September 24, 2024, IGI Report No LG649417792, ROUND BRILLIANT, 5.02 CARATS, D, VS 1, EXCELLENT, 61.6%, 57%, Slightly Thick (Faceted), Pointed, EXCELLENT, EXCELLENT, NONE, IGI LG649417792. Comments: This Laboratory Grown Diamond was created by Chemical Vapor Deposition (CVD) growth process. Type IIa