



**INTERNATIONAL  
GEMOLOGICAL  
INSTITUTE**

**ELECTRONIC COPY**

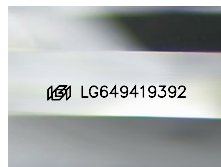
**LG649419392**



August 27, 2024  
**IGI Report Number** LG649419392  
**EMERALD CUT**  
**LABORATORY GROWN DIAMOND**  
**6.91 X 4.67 X 2.83 MM**  
 Carat Weight **0.97 CARAT**  
 Color Grade **G**  
 Clarity Grade **VVS 2**  
 Polish **VERY GOOD**  
 Symmetry **EXCELLENT**  
 Fluorescence **NONE**  
 Inscription(s) **IGI LG649419392**

**LABORATORY GROWN DIAMOND REPORT**

August 27, 2024  
 IGI Report Number **LG649419392**  
 Description **LABORATORY GROWN DIAMOND**  
 Shape and Cutting Style **EMERALD CUT**  
 Measurements **6.91 X 4.67 X 2.83 MM**



Sample Image Used

Comments: As Grown - No indication of post-growth treatment. This Laboratory Grown Diamond was created by High Pressure High Temperature (HPHT) growth process. Type II Faint Blue

**GRADING RESULTS**

Carat Weight **0.97 CARAT**  
 Color Grade **G**  
 Clarity Grade **VVS 2**

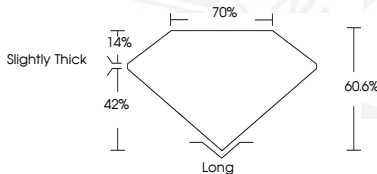
**ADDITIONAL GRADING INFORMATION**

Polish **VERY GOOD**  
 Symmetry **EXCELLENT**  
 Fluorescence **NONE**  
 Inscription(s) **IGI LG649419392**

Comments: As Grown - No indication of post-growth treatment. This Laboratory Grown Diamond was created by High Pressure High Temperature (HPHT) growth process. Type II Faint Blue



August 27, 2024  
**IGI Report Number** LG649419392  
**EMERALD CUT**  
**LABORATORY GROWN DIAMOND**  
**6.91 X 4.67 X 2.83 MM**  
 Carat Weight **0.97 CARAT**  
 Color Grade **G**  
 Clarity Grade **VVS 2**  
 Polish **VERY GOOD**  
 Symmetry **EXCELLENT**  
 Fluorescence **NONE**  
 Inscription(s) **IGI LG649419392**



THIS DOCUMENT WAS PRODUCED WITH THE FOLLOWING SECURITY MEASURES: SPECIAL DOCUMENT PAPER, INK SCREENS, WATERMARK, BACKGROUND DESIGN, HOLOGRAM AND OTHER SECURITY FEATURES NOT LISTED AND DO EXCEED DOCUMENT SECURITY INDUSTRY GUIDELINES.

For terms & conditions and to verify this report, please visit [www.igi.org](http://www.igi.org)