



ELECTRONIC COPY

LG649421225
Report verification at igi.org

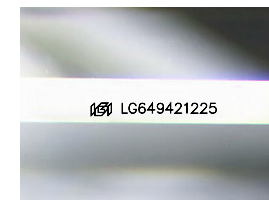


August 29, 2024
IGI Report Number **LG649421225**
Description **LABORATORY GROWN DIAMOND**

Shape and Cutting Style **EMERALD CUT**
Measurements **10.43 X 7.31 X 4.95 MM**

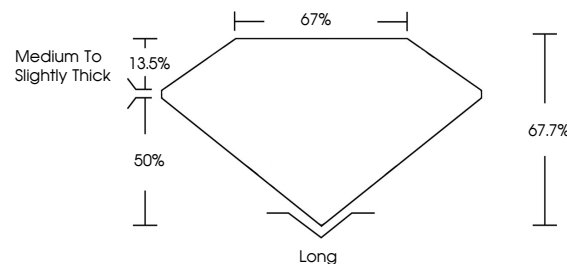
GRADING RESULTS

Carat Weight **3.77 CARATS**
Color Grade **D**
Clarity Grade **VS 1**

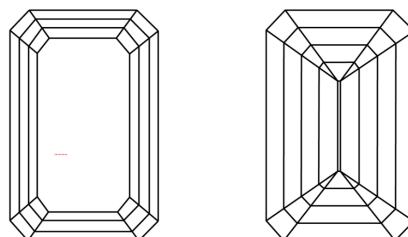


Sample Image Used

PROPORTIONS



CLARITY CHARACTERISTICS



KEY TO SYMBOLS

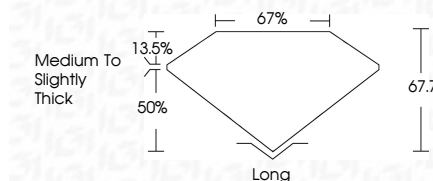
Red symbols indicate internal characteristics.
Green symbols indicate external characteristics.

COLOR

D E F G H I J Faint Very Light Light

CLARITY

IF	VS ¹⁻²	VS ¹⁻²	SI ¹⁻²	I ¹⁻³
Internally Flawless	Very Very Slightly Included	Very Slightly Included	Slightly Included	Included



ADDITIONAL GRADING INFORMATION

Polish **EXCELLENT**
Symmetry **EXCELLENT**
Fluorescence **NONE**
Inscription(s) **(IGI) LG649421225**
Comments: This Laboratory Grown Diamond was created by Chemical Vapor Deposition (CVD) growth process.
Type IIa



IGI



August 29, 2024
IGI Report No. **LG649421225**
EMERALD CUT
10.43 X 7.31 X 4.95 MM
3.77 CARATS
D
VS 1
67.7%
67%
Medium to Slightly Thick
Long
EXCELLENT
EXCELLENT
NONE
(IGI) LG649421225
Comments: This Laboratory Grown Diamond was created by Chemical Vapor Deposition (CVD) growth process.
Type IIa