



ELECTRONIC COPY

LG649427915
Report verification at igi.org



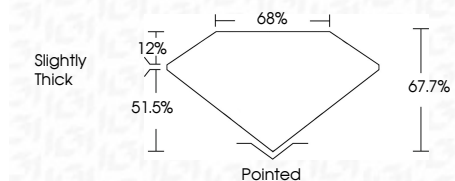
August 29, 2024
IGI Report Number LG649427915
Description LABORATORY GROWN DIAMOND

Shape and Cutting Style CUT CORNERED RECTANGULAR MODIFIED BRILLIANT

Measurements 11.99 X 8.32 X 5.63 MM

GRADING RESULTS

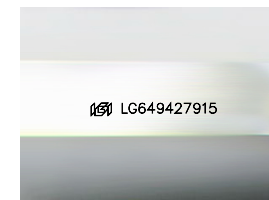
Carat Weight 4.95 CARATS
Color Grade G
Clarity Grade VS 1



ADDITIONAL GRADING INFORMATION

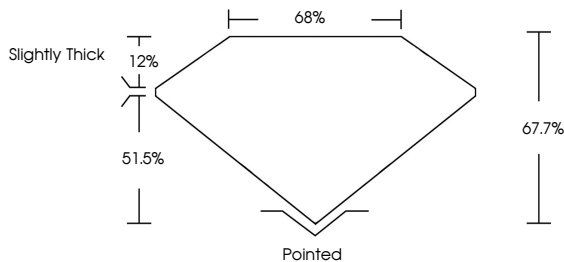
Polish EXCELLENT
Symmetry EXCELLENT
Fluorescence NONE

Inscription(s) IGI LG649427915
Comments: This Laboratory Grown Diamond was created by Chemical Vapor Deposition (CVD) growth process. Type IIa

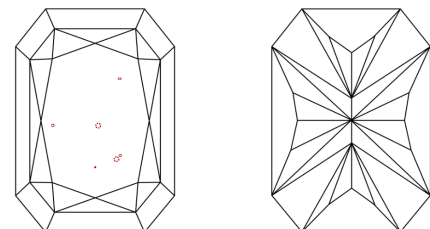


Sample Image Used

PROPORTIONS



CLARITY CHARACTERISTICS



KEY TO SYMBOLS
Red symbols indicate internal characteristics.
Green symbols indicate external characteristics.

COLOR

Color scale table with columns D, E, F, G, H, I, J, Faint, Very Light, Light

CLARITY

Clarity scale table with columns IF, VS 1-2, VS 1-2, SI 1-2, I 1-3, Internally Flawless, Very Very Slightly Included, Very Slightly Included, Slightly Included, Included



August 29, 2024
IGI Report No LG649427915
CUT CORNERED RECT. MODIFIED BRILLIANT
4.95 CARATS G
11.99 X 8.32 X 5.63 MM
Color Grade G
Clarity Grade VS 1
Depth 67.7%
Table 68%
Girdle Slightly Thick
Culet Pointed
Polish EXCELLENT
Symmetry EXCELLENT
Fluorescence NONE
Inscription(s) IGI LG649427915
Comments: This Laboratory Grown Diamond was created by Chemical Vapor Deposition (CVD) growth process. Type IIa