



ELECTRONIC COPY

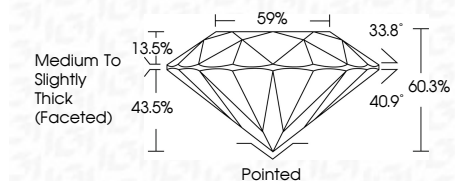
LG649428163 Report verification at igi.org



August 30, 2024 IGI Report Number LG649428163 Description LABORATORY GROWN DIAMOND Shape and Cutting Style ROUND BRILLIANT Measurements 6.55 - 6.59 X 3.97 MM

GRADING RESULTS

Carat Weight 1.05 CARAT Color Grade E Clarity Grade VS 2 Cut Grade IDEAL

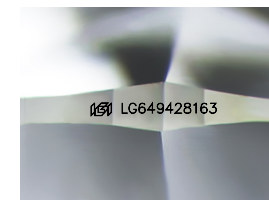


ADDITIONAL GRADING INFORMATION

Polish EXCELLENT Symmetry EXCELLENT Fluorescence NONE Inscription(s) IGI LG649428163 Comments: This Laboratory Grown Diamond was created by Chemical Vapor Deposition (CVD) growth process. Type IIa

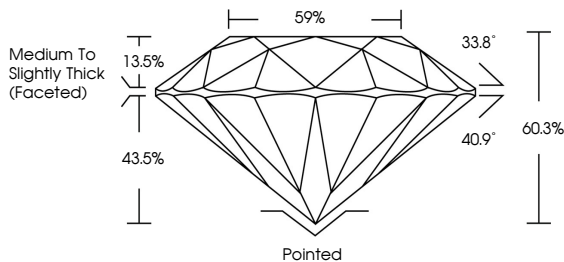


August 30, 2024 IGI Report No LG649428163 ROUND BRILLIANT 6.55 - 6.59 X 3.97 MM 1.05 CARAT E VS 2 IDEAL 60.3% 59% Medium To Slightly Thick (Faceted) Pointed EXCELLENT EXCELLENT NONE IGI LG649428163 Comments: This Laboratory Grown Diamond was created by Chemical Vapor Deposition (CVD) growth process. Type IIa

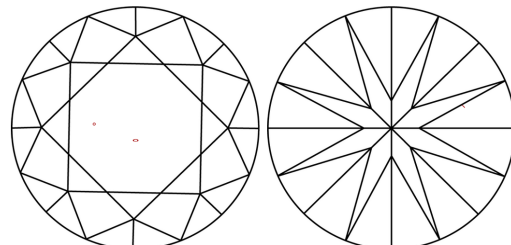


Sample Image Used

PROPORTIONS



CLARITY CHARACTERISTICS



KEY TO SYMBOLS

Red symbols indicate internal characteristics. Green symbols indicate external characteristics.

COLOR

Color scale table with categories D, E, F, G, H, I, J, Faint, Very Light, Light

CLARITY

Clarity scale table with categories IF, VS 1-2, VS 1-2, SI 1-2, I 1-3, Internally Flawless, Very Very Slightly Included, Very Slightly Included, Slightly Included, Included

