



ELECTRONIC COPY

LG649428329 Report verification at igi.org



August 28, 2024 IGI Report Number LG649428329 Description LABORATORY GROWN DIAMOND Shape and Cutting Style CUT CORNERED RECTANGULAR MODIFIED BRILLIANT Measurements 10.22 X 7.12 X 4.73 MM GRADING RESULTS Carat Weight 2.92 CARATS Color Grade F Clarity Grade VS 1

August 28, 2024 IGI Report Number LG649428329 Description LABORATORY GROWN DIAMOND Shape and Cutting Style CUT CORNERED RECTANGULAR MODIFIED BRILLIANT Measurements 10.22 X 7.12 X 4.73 MM

GRADING RESULTS

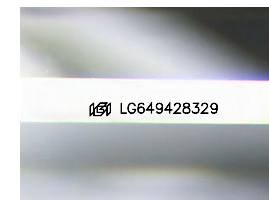
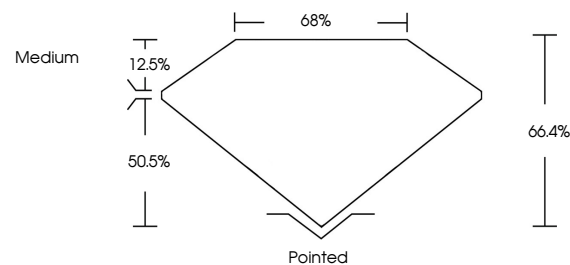
Carat Weight 2.92 CARATS Color Grade F Clarity Grade VS 1

ADDITIONAL GRADING INFORMATION

Polish EXCELLENT Symmetry EXCELLENT Fluorescence NONE Inscription(s) LG649428329

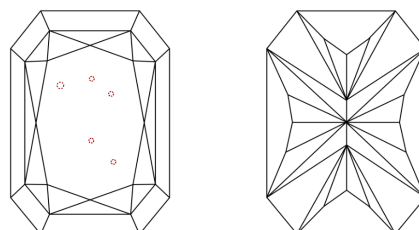
Comments: This Laboratory Grown Diamond was created by Chemical Vapor Deposition (CVD) growth process. Type IIa

PROPORTIONS



Sample Image Used

CLARITY CHARACTERISTICS



KEY TO SYMBOLS

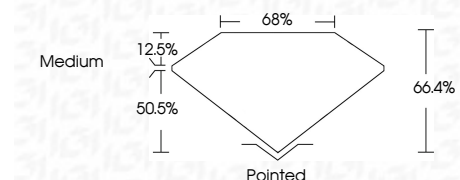
Red symbols indicate internal characteristics. Green symbols indicate external characteristics.

COLOR

D E F G H I J Faint Very Light Light

CLARITY

IF VS 1-2 VS 1-2 SI 1-2 I 1-3 Internally Flawless Very Very Slightly Included Very Slightly Included Slightly Included Included



ADDITIONAL GRADING INFORMATION

Polish EXCELLENT Symmetry EXCELLENT Fluorescence NONE Inscription(s) LG649428329 Comments: This Laboratory Grown Diamond was created by Chemical Vapor Deposition (CVD) growth process. Type IIa



IGI



August 28, 2024 IGI Report No LG649428329 CUT CORNERED RECT. MODIFIED BRILLIANT 10.22 X 7.12 X 4.73 MM 2.92 CARATS F VS 1 66.4% 50.5% Medium Pointed EXCELLENT EXCELLENT NONE LG649428329 Comments: This Laboratory Grown Diamond was created by Chemical Vapor Deposition (CVD) growth process. Type IIa