



**ELECTRONIC COPY**

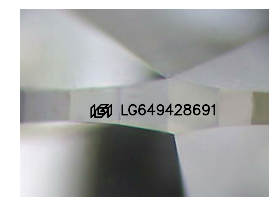
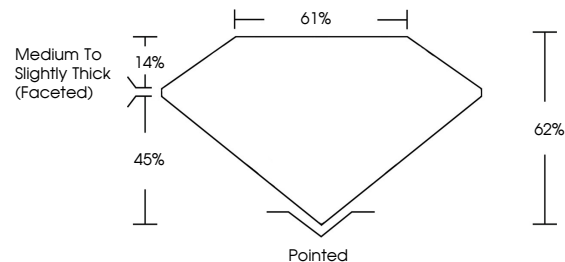
LG649428691  
Report verification at igi.org



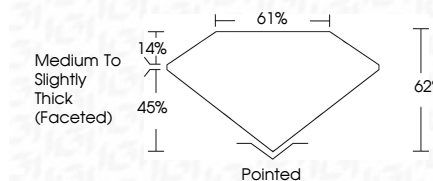
August 27, 2024  
IGI Report Number **LG649428691**  
Description **LABORATORY GROWN DIAMOND**  
Shape and Cutting Style **OVAL BRILLIANT**  
Measurements **11.25 X 7.71 X 4.78 MM**  
**GRADING RESULTS**  
Carat Weight **2.60 CARATS**  
Color Grade **D**  
Clarity Grade **VVS 2**

August 27, 2024  
IGI Report Number **LG649428691**  
Description **LABORATORY GROWN DIAMOND**  
Shape and Cutting Style **OVAL BRILLIANT**  
Measurements **11.25 X 7.71 X 4.78 MM**  
**GRADING RESULTS**  
Carat Weight **2.60 CARATS**  
Color Grade **D**  
Clarity Grade **VVS 2**

**PROPORTIONS**



Sample Image Used



**ADDITIONAL GRADING INFORMATION**

Polish **EXCELLENT**  
Symmetry **EXCELLENT**  
Fluorescence **NONE**  
Inscription(s) **IGI LG649428691**

Comments: This Laboratory Grown Diamond was created by Chemical Vapor Deposition (CVD) growth process. Type IIa

**ADDITIONAL GRADING INFORMATION**

Polish **EXCELLENT**  
Symmetry **EXCELLENT**  
Fluorescence **NONE**  
Inscription(s) **IGI LG649428691**  
Comments: This Laboratory Grown Diamond was created by Chemical Vapor Deposition (CVD) growth process. Type IIa

**COLOR**

D E F G H I J Faint Very Light Light

**CLARITY**

IF	VS <sup>1-2</sup>	VS <sup>1-2</sup>	SI <sup>1-2</sup>	I <sup>1-3</sup>
Internally Flawless	Very Very Slightly Included	Very Slightly Included	Slightly Included	Included



**IGI**



August 27, 2024  
IGI Report No LG649428691  
OVAL BRILLIANT  
11.25 X 7.71 X 4.78 MM  
2.60 CARATS  
D  
Color Grade  
VS 2  
Depth 62%  
Table 61%  
Medium to Slightly Thick (Faceted)  
Girdle  
Pointed  
Culet  
Polish EXCELLENT  
Symmetry EXCELLENT  
Fluorescence NONE  
Inscription(s) IGI LG649428691  
Comments: This Laboratory Grown Diamond was created by Chemical Vapor Deposition (CVD) growth process. Type IIa