



ELECTRONIC COPY

LG649430793
Report verification at igi.org

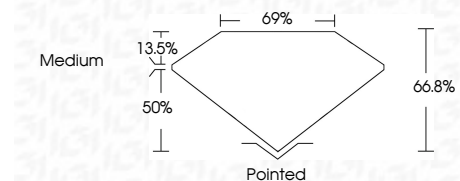


August 30, 2024
IGI Report Number **LG649430793**
Description **LABORATORY GROWN DIAMOND**

Shape and Cutting Style **CUT CORNERED
RECTANGULAR MODIFIED
BRILLIANT**

Measurements **8.66 X 6.05 X 4.04 MM**

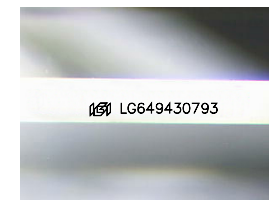
GRADING RESULTS
Carat Weight **1.83 CARAT**
Color Grade **H**
Clarity Grade **INTERNALLY FLAWLESS**



ADDITIONAL GRADING INFORMATION
Polish **EXCELLENT**
Symmetry **EXCELLENT**
Fluorescence **NONE**
Inscription(s) **IGI LG649430793**
Comments: This Laboratory Grown Diamond was created by Chemical Vapor Deposition (CVD) growth process. Type IIa

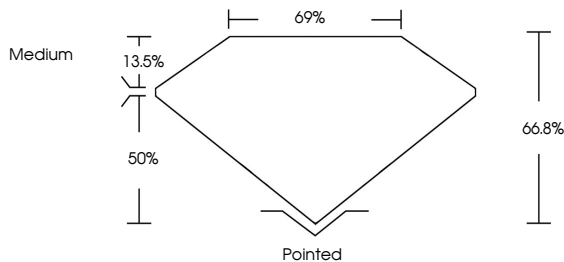


August 30, 2024
IGI Report No LG649430793
CUT CORNERED RECT. MODIFIED BRILLIANT
8.66 X 6.05 X 4.04 MM
1.83 CARAT H
Color Grade
Depth 66.8%
Table 69%
Girdle
Medium
Pointed
EXCELLENT
EXCELLENT
NONE
IGI LG649430793
Comments: This Laboratory Grown Diamond was created by Chemical Vapor Deposition (CVD) growth process. Type IIa

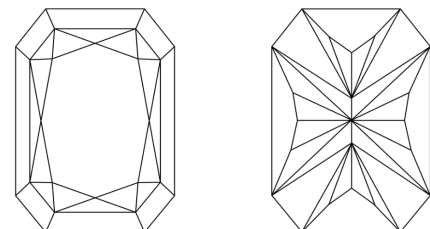


Sample Image Used

PROPORTIONS



CLARITY CHARACTERISTICS



KEY TO SYMBOLS
Red symbols indicate internal characteristics.
Green symbols indicate external characteristics.

COLOR

D	E	F	G	H	I	J	Faint	Very Light	Light
---	---	---	---	---	---	---	-------	------------	-------

CLARITY

IF	VS ¹⁻²	VS ¹⁻²	SI ¹⁻²	I ¹⁻³
Internally Flawless	Very Very Slightly Included	Very Slightly Included	Slightly Included	Included



August 30, 2024
IGI Report Number **LG649430793**
Description **LABORATORY GROWN DIAMOND**
Shape and Cutting Style **CUT CORNERED RECTANGULAR
MODIFIED BRILLIANT**
Measurements **8.66 X 6.05 X 4.04 MM**
GRADING RESULTS
Carat Weight **1.83 CARAT**
Color Grade **H**
Clarity Grade **INTERNALLY FLAWLESS**
ADDITIONAL GRADING INFORMATION
Polish **EXCELLENT**
Symmetry **EXCELLENT**
Fluorescence **NONE**
Inscription(s) **IGI LG649430793**

Comments: This Laboratory Grown Diamond was created by Chemical Vapor Deposition (CVD) growth process. Type IIa