



ELECTRONIC COPY

LABORATORY GROWN DIAMOND REPORT

August 29, 2024	
IGI Report Number	LG649431495
Description	LABORATORY GROWN DIAMOND
Shape and Cutting Style	OVAL BRILLIANT
Measurements	9.67 X 7.12 X 4.47 MM

GRADING RESULTS

Carat Weight	1.97 CARAT
Color Grade	G
Clarity Grade	VS1

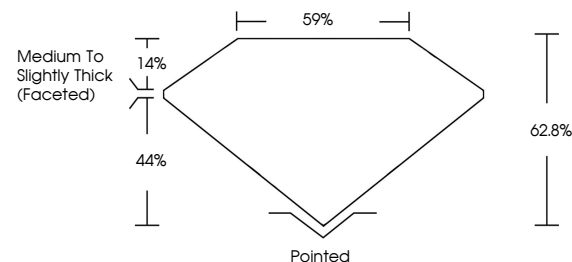
ADDITIONAL GRADING INFORMATION

Polish	EXCELLENT
Symmetry	EXCELLENT
Fluorescence	NONE
Inscription(s)	151 LG649431495

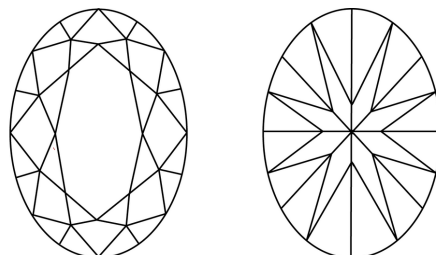
Comments: This Laboratory Grown Diamond was created by Chemical Vapor Deposition (CVD) growth process.
Type IIa

LG649431495
Report verification at lgi.org

PROPORTIONS



CLARITY CHARACTERISTICS



KEY TO SYMBOLS

Red symbols indicate internal characteristics.
Green symbols indicate external characteristics.

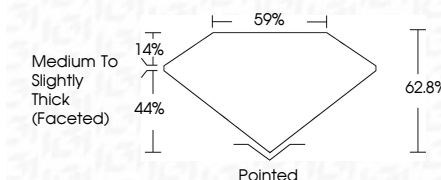
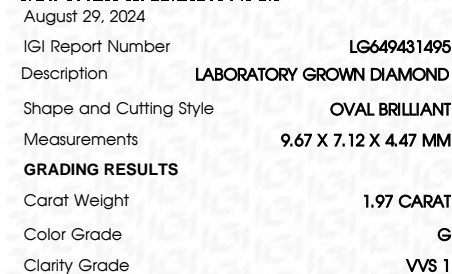


COLOR

D E F G H I J Faint Very Light Light

CLARITY

IF	VS ¹⁻²	VS ¹⁻²	SI ¹⁻²	I ¹⁻³
Internally Flawless	Very Very Slightly Included	Very Slightly Included	Slightly Included	Included



ADDITIONAL GRADING INFORMATION

Polish	EXCELLENT
Symmetry	EXCELLENT
Fluorescence	NONE
Inscription(s)	 LG649431495
<p>Comments: This Laboratory Grown Diamond was created by Chemical Vapor Deposition (CVD) growth process.</p> <p>Type IIa</p>	



© IGI 2020, International Gemological Institute

FD - 10 20

www.igi.org

THIS DOCUMENT WAS PRODUCED WITH THE FOLLOWING SECURITY MEASURES: SPECIAL DOCUMENT PAPER, INK SCREENS, WATERMARK BACKGROUND DESIGNS, HOLOGRAM AND OTHER SECURITY FEATURES NOT LISTED AND DO EXCEED DOCUMENT SECURITY INDUSTRY GUIDELINES

August 29, 2024
GI Report No LG649431495
COVAL BRILLIANT

1.67 X 7.12 X 4.47 MM	1.97 CARAT
Carat Weight	VVS 1
Color Grade	62.8%
Clarity Grade	59%
Depth	Medium To Slightly Thick (rounded)
Table	Pointed
Grade	EXCELLENT
Quiet	EXCELLENT
Polish	NONE
Symmetry	see ICA494931.pdf
Fluorescence	
Inscriptions(s)	

Comments:
This Laboratory Grown Diamond was
created by Chemical Vapor Deposition
(CVD) growth process.