



**INTERNATIONAL  
GEMOLOGICAL  
INSTITUTE**

**ELECTRONIC COPY**

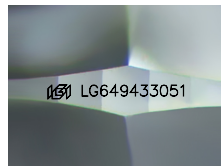
**LG649433051**



August 29, 2024  
**IGI Report Number** LG649433051  
**CUSHION MODIFIED BRILLIANT**  
**LABORATORY GROWN DIAMOND**  
**5.59 X 4.52 X 2.99 MM**  
**Carat Weight** 0.58 CARAT  
**Color Grade** D  
**Clarity Grade** VS 2  
**Polish** EXCELLENT  
**Symmetry** VERY GOOD  
**Fluorescence** NONE  
**Inscription(s)** IGI LG649433051

**LABORATORY GROWN DIAMOND REPORT**

August 29, 2024  
**IGI Report Number** LG649433051  
**Description** LABORATORY GROWN DIAMOND  
**Shape and Cutting Style** CUSHION MODIFIED BRILLIANT  
**Measurements** 5.59 X 4.52 X 2.99 MM



Sample Image Used

**Comments:** This Laboratory Grown Diamond was created by Chemical Vapor Deposition (CVD) growth process. Type IIa

**GRADING RESULTS**

**Carat Weight** 0.58 CARAT  
**Color Grade** D  
**Clarity Grade** VS 2

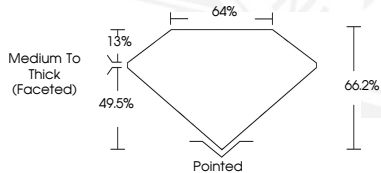
**ADDITIONAL GRADING INFORMATION**

**Polish** EXCELLENT  
**Symmetry** VERY GOOD  
**Fluorescence** NONE  
**Inscription(s)** IGI LG649433051

**Comments:** This Laboratory Grown Diamond was created by Chemical Vapor Deposition (CVD) growth process. Type IIa



August 29, 2024  
**IGI Report Number** LG649433051  
**CUSHION MODIFIED BRILLIANT**  
**LABORATORY GROWN DIAMOND**  
**5.59 X 4.52 X 2.99 MM**  
**Carat Weight** 0.58 CARAT  
**Color Grade** D  
**Clarity Grade** VS 2  
**Polish** EXCELLENT  
**Symmetry** VERY GOOD  
**Fluorescence** NONE  
**Inscription(s)** IGI LG649433051



**Comments:** This Laboratory Grown Diamond was created by Chemical Vapor Deposition (CVD) growth process. Type IIa

THIS DOCUMENT WAS PRODUCED WITH THE FOLLOWING SECURITY MEASURES: SPECIAL DOCUMENT PAPER, INK SCREENS, WATERMARK, BACKGROUND DESIGN, HOLOGRAM AND OTHER SECURITY FEATURES NOT LISTED AND DO EXCEED DOCUMENT SECURITY INDUSTRY GUIDELINES.

For terms & conditions and to verify this report, please visit [www.igi.org](http://www.igi.org)