



**ELECTRONIC COPY**

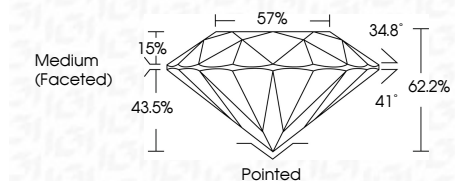
LG649433229  
Report verification at igi.org



August 29, 2024  
IGI Report Number **LG649433229**  
Description **LABORATORY GROWN DIAMOND**  
Shape and Cutting Style **ROUND BRILLIANT**  
Measurements **8.16 - 8.20 X 5.08 MM**

**GRADING RESULTS**

Carat Weight **2.09 CARATS**  
Color Grade **F**  
Clarity Grade **VVS 2**  
Cut Grade **IDEAL**

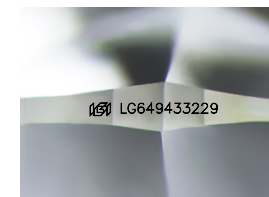


**ADDITIONAL GRADING INFORMATION**

Polish **EXCELLENT**  
Symmetry **EXCELLENT**  
Fluorescence **NONE**  
Inscription(s) **IGI LG649433229**  
Comments: This Laboratory Grown Diamond was created by Chemical Vapor Deposition (CVD) growth process. Type IIa

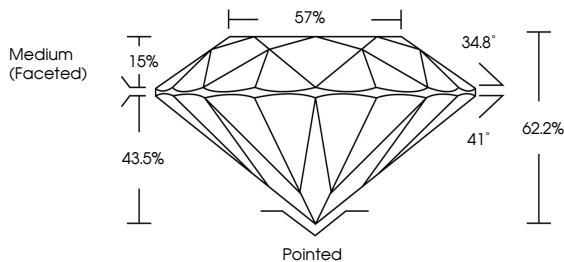


August 29, 2024  
IGI Report No LG649433229  
**ROUND BRILLIANT**  
8.16 - 8.20 X 5.08 MM  
2.09 CARATS  
F  
VVS 2  
IDEAL  
62.2%  
57%  
Medium (Faceted)  
Pointed  
EXCELLENT  
EXCELLENT  
NONE  
IGI LG649433229  
Comments: This Laboratory Grown Diamond was created by Chemical Vapor Deposition (CVD) growth process. Type IIa

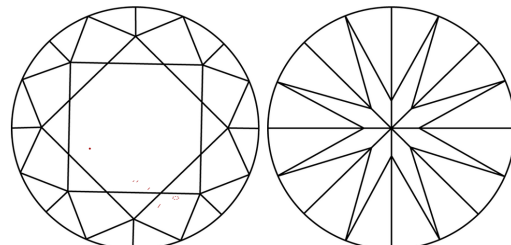


Sample Image Used

**PROPORTIONS**



**CLARITY CHARACTERISTICS**



**KEY TO SYMBOLS**

Red symbols indicate internal characteristics.  
Green symbols indicate external characteristics.

**COLOR**

|   |   |   |   |   |   |   |       |            |       |
|---|---|---|---|---|---|---|-------|------------|-------|
| D | E | F | G | H | I | J | Faint | Very Light | Light |
|---|---|---|---|---|---|---|-------|------------|-------|

**CLARITY**

|                     |                             |                        |                   |                  |
|---------------------|-----------------------------|------------------------|-------------------|------------------|
| IF                  | WS <sup>1-2</sup>           | VS <sup>1-2</sup>      | SI <sup>1-2</sup> | I <sup>1-3</sup> |
| Internally Flawless | Very Very Slightly Included | Very Slightly Included | Slightly Included | Included         |

