



ELECTRONIC COPY

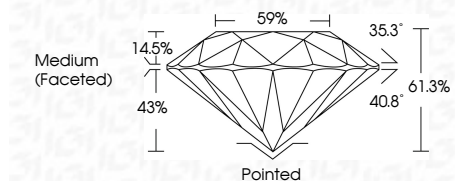
LG649433384 Report verification at igi.org



August 29, 2024 IGI Report Number LG649433384 Description LABORATORY GROWN DIAMOND Shape and Cutting Style ROUND BRILLIANT Measurements 8.20 - 8.23 X 5.03 MM

GRADING RESULTS

Carat Weight 2.09 CARATS Color Grade F Clarity Grade VVS 2 Cut Grade IDEAL



ADDITIONAL GRADING INFORMATION

Polish EXCELLENT Symmetry EXCELLENT Fluorescence NONE Inscription(s) IGI LG649433384 Comments: This Laboratory Grown Diamond was created by Chemical Vapor Deposition (CVD) growth process. Type IIa



Summary table of diamond characteristics: August 29, 2024, IGI Report No LG649433384, ROUND BRILLIANT, 8.20 - 8.23 X 5.03 MM, 2.09 CARATS, F, VVS 2, IDEAL, 61.3%, 59%, Medium (Faceted), Pointed, EXCELLENT, EXCELLENT, NONE, IGI LG649433384.

August 29, 2024 IGI Report Number LG649433384 Description LABORATORY GROWN DIAMOND Shape and Cutting Style ROUND BRILLIANT Measurements 8.20 - 8.23 X 5.03 MM

GRADING RESULTS

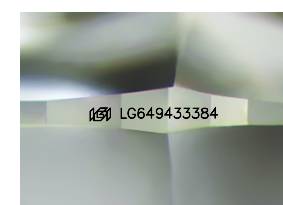
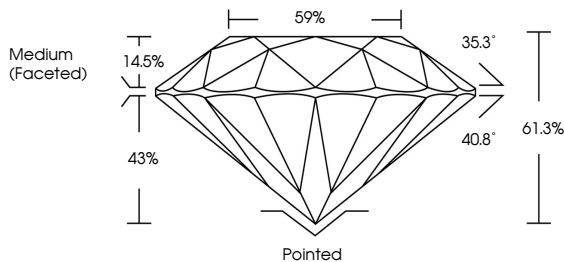
Carat Weight 2.09 CARATS Color Grade F Clarity Grade VVS 2 Cut Grade IDEAL

ADDITIONAL GRADING INFORMATION

Polish EXCELLENT Symmetry EXCELLENT Fluorescence NONE Inscription(s) IGI LG649433384

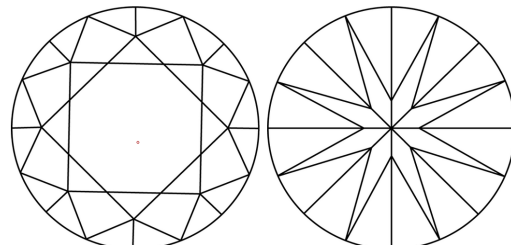
Comments: This Laboratory Grown Diamond was created by Chemical Vapor Deposition (CVD) growth process. Type IIa

PROPORTIONS



Sample Image Used

CLARITY CHARACTERISTICS



KEY TO SYMBOLS

Red symbols indicate internal characteristics. Green symbols indicate external characteristics.

COLOR

D E F G H I J Faint Very Light Light

CLARITY

IF WS 1-2 VS 1-2 SI 1-2 I 1-3 Internally Flawless Very Very Slightly Included Very Slightly Included Slightly Included Included

