



ELECTRONIC COPY

LG649435151
Report verification at igi.org



September 26, 2024

IGI Report Number LG649435151

Description LABORATORY GROWN DIAMOND

Shape and Cutting Style ROUND BRILLIANT

Measurements 6.40 - 6.42 X 4.02 MM

GRADING RESULTS

Carat Weight 1.03 CARAT

Color Grade FANCY PINK

Clarity Grade VVS 2

Cut Grade EXCELLENT

September 26, 2024
IGI Report Number LG649435151
Description LABORATORY GROWN DIAMOND
Shape and Cutting Style ROUND BRILLIANT
Measurements 6.40 - 6.42 X 4.02 MM

GRADING RESULTS

Carat Weight 1.03 CARAT

Color Grade FANCY PINK

Clarity Grade VVS 2

Cut Grade EXCELLENT

ADDITIONAL GRADING INFORMATION

Polish EXCELLENT

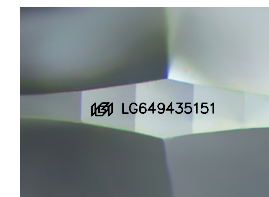
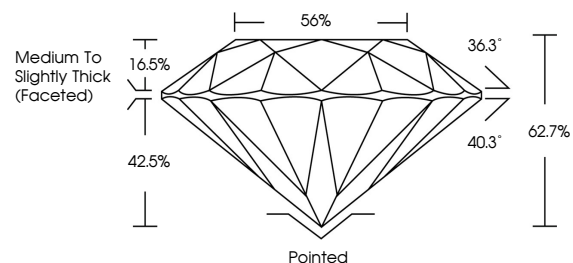
Symmetry EXCELLENT

Fluorescence SLIGHT

Inscription(s) IGI LG649435151

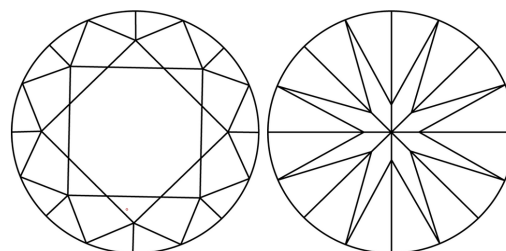
Comments: This Laboratory Grown Diamond was created by Chemical Vapor Deposition (CVD) growth process. Indications of post-growth treatment.

PROPORTIONS



Sample Image Used

CLARITY CHARACTERISTICS



KEY TO SYMBOLS

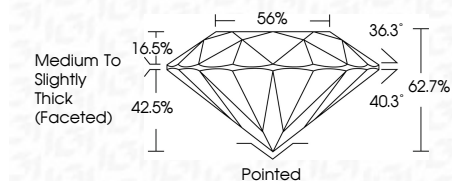
Red symbols indicate internal characteristics. Green symbols indicate external characteristics.

COLOR

D E F G H I J Faint Very Light Light

CLARITY

IF VVS 1-2 VS 1-2 SI 1-2 I 1-3
Internally Flawless Very Very Slightly Included Very Slightly Included Slightly Included Included



ADDITIONAL GRADING INFORMATION

Polish EXCELLENT

Symmetry EXCELLENT

Fluorescence SLIGHT

Inscription(s) IGI LG649435151

Comments: This Laboratory Grown Diamond was created by Chemical Vapor Deposition (CVD) growth process. Indications of post-growth treatment.



Summary of report details including date, report number, description, measurements, grading results, and additional information.