



ELECTRONIC COPY

LG649435421
Report verification at igi.org



August 30, 2024
IGI Report Number **LG649435421**
Description **LABORATORY GROWN DIAMOND**
Shape and Cutting Style **ROUND BRILLIANT**
Measurements **8.26 - 8.29 X 5.02 MM**
GRADING RESULTS
Carat Weight **2.14 CARATS**
Color Grade **FANCY VIVID GREEN**
Clarity Grade **VS 2**
Cut Grade **IDEAL**

August 30, 2024
IGI Report Number **LG649435421**
Description **LABORATORY GROWN DIAMOND**
Shape and Cutting Style **ROUND BRILLIANT**
Measurements **8.26 - 8.29 X 5.02 MM**

GRADING RESULTS

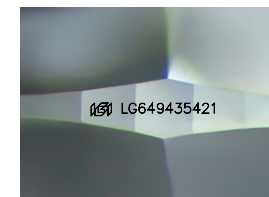
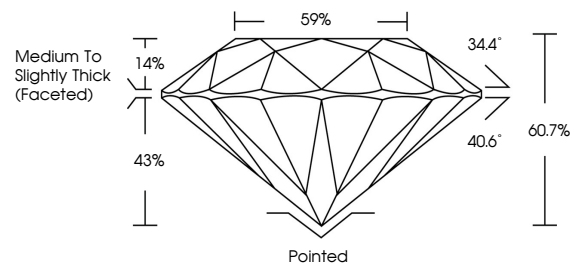
Carat Weight **2.14 CARATS**
Color Grade **FANCY VIVID GREEN**
Clarity Grade **VS 2**
Cut Grade **IDEAL**

ADDITIONAL GRADING INFORMATION

Polish **EXCELLENT**
Symmetry **EXCELLENT**
Fluorescence **NONE**
Inscription(s) **LG649435421**

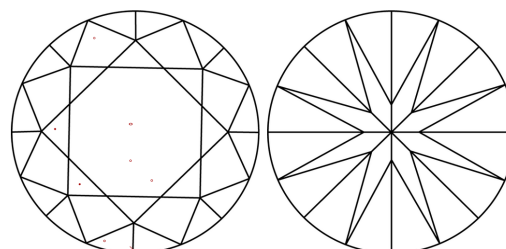
Comments: This Laboratory Grown Diamond was created by Chemical Vapor Deposition (CVD) growth process.
Indications of post-growth treatment.

PROPORTIONS



Sample Image Used

CLARITY CHARACTERISTICS



KEY TO SYMBOLS

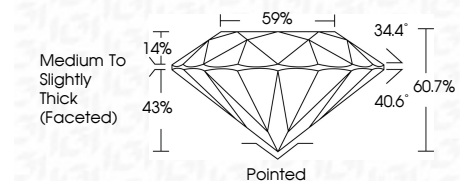
Red symbols indicate internal characteristics.
Green symbols indicate external characteristics.

COLOR

D E F G H I J Faint Very Light Light

CLARITY

IF VS¹⁻² VS¹⁻² SI¹⁻² I¹⁻³
Internally Flawless Very Very Slightly Included Very Slightly Included Slightly Included Included



ADDITIONAL GRADING INFORMATION

Polish **EXCELLENT**
Symmetry **EXCELLENT**
Fluorescence **NONE**
Inscription(s) **LG649435421**
Comments: This Laboratory Grown Diamond was created by Chemical Vapor Deposition (CVD) growth process.
Indications of post-growth treatment.



August 30, 2024
IGI Report No **LG649435421**
ROUND BRILLIANT
8.26 - 8.29 X 5.02 MM
Carat Weight **2.14 CARATS**
Color Grade **FANCY VIVID GREEN**
Clarity Grade **VS 2**
Cut Grade **IDEAL**
Depth **60.7%**
Table **59%**
Girdle **Medium To Slightly Thick (Faceted)**
Culet **Pointed**
Polish **EXCELLENT**
Symmetry **EXCELLENT**
Fluorescence **NONE**
Inscriptions(s) **LG649435421**
Comments: This Laboratory Grown Diamond was created by Chemical Vapor Deposition (CVD) growth process.
Indications of post-growth treatment.