



ELECTRONIC COPY

LABORATORY GROWN DIAMOND REPORT

September 6, 2024
IGI Report Number LG649438860
Description LABORATORY GROWN DIAMOND
Shape and Cutting Style PRINCESS CUT
Measurements 6.33 X 6.32 X 4.33 MM

GRADING RESULTS

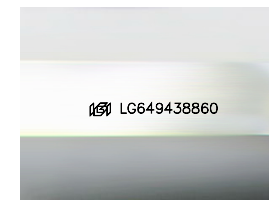
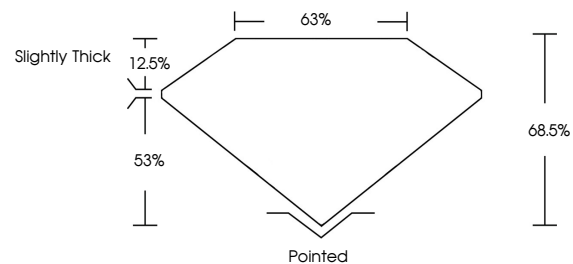
Carat Weight 1.57 CARAT
Color Grade E
Clarity Grade VVS 2

ADDITIONAL GRADING INFORMATION

Polish EXCELLENT
Symmetry EXCELLENT
Fluorescence NONE
Inscription(s) IGI LG649438860

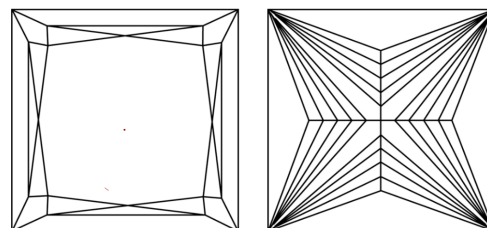
Comments: This Laboratory Grown Diamond was created by Chemical Vapor Deposition (CVD) growth process.
Type IIa

PROPORTIONS



Sample Image Used

CLARITY CHARACTERISTICS



KEY TO SYMBOLS

Red symbols indicate internal characteristics.
Green symbols indicate external characteristics.

COLOR

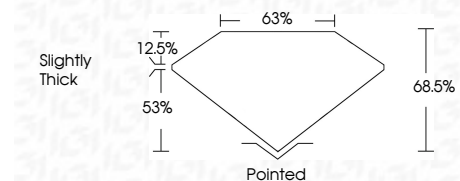
D E F G H I J Faint Very Light Light

CLARITY

IF WVS 1-2 VS 1-2 SI 1-2 I 1-3
Internally Flawless Very Very Slightly Included Very Slightly Included Slightly Included Included



September 6, 2024
IGI Report Number LG649438860
Description LABORATORY GROWN DIAMOND
Shape and Cutting Style PRINCESS CUT
Measurements 6.33 X 6.32 X 4.33 MM
GRADING RESULTS
Carat Weight 1.57 CARAT
Color Grade E
Clarity Grade VVS 2



ADDITIONAL GRADING INFORMATION

Polish EXCELLENT
Symmetry EXCELLENT
Fluorescence NONE
Inscription(s) IGI LG649438860
Comments: This Laboratory Grown Diamond was created by Chemical Vapor Deposition (CVD) growth process.
Type IIa



IGI



September 6, 2024
IGI Report No LG649438860
PRINCESS CUT
6.33 X 6.32 X 4.33 MM
1.57 CARAT
E
VVS 2
68.5%
53%
Slightly Thick
Pointed
EXCELLENT
EXCELLENT
NONE
IGI LG649438860
Comments: This Laboratory Grown Diamond was created by Chemical Vapor Deposition (CVD) growth process.
Type IIa