



ELECTRONIC COPY

LG649454322
Report verification at igi.org



August 30, 2024

IGI Report Number **LG649454322**

Description **LABORATORY GROWN DIAMOND**

Shape and Cutting Style **CUSHION BRILLIANT**

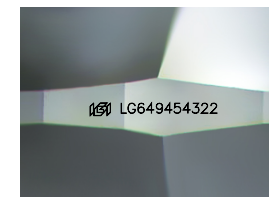
Measurements **9.06 X 6.58 X 4.37 MM**

GRADING RESULTS

Carat Weight **2.08 CARATS**

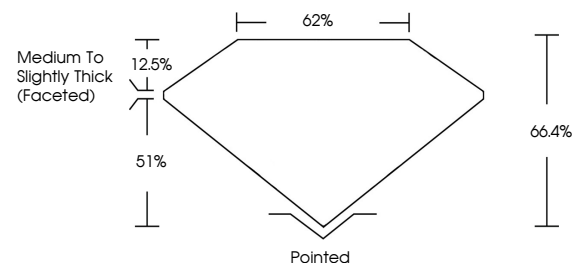
Color Grade **E**

Clarity Grade **SI 1**

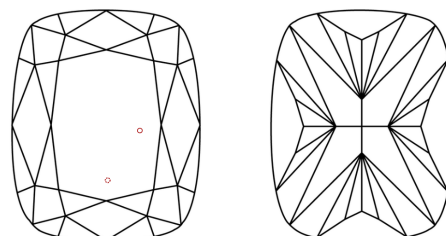


Sample Image Used

PROPORTIONS



CLARITY CHARACTERISTICS



KEY TO SYMBOLS

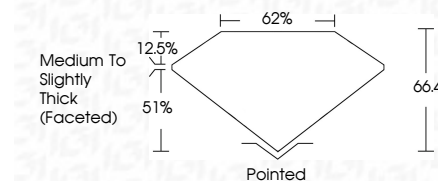
Red symbols indicate internal characteristics.
Green symbols indicate external characteristics.

COLOR

D E F G H I J Faint Very Light Light

CLARITY

IF	VS ¹⁻²	VS ¹⁻²	SI ¹⁻²	I ¹⁻³
Internally Flawless	Very Very Slightly Included	Very Slightly Included	Slightly Included	Included



ADDITIONAL GRADING INFORMATION

Polish **EXCELLENT**

Symmetry **EXCELLENT**

Fluorescence **NONE**

Inscription(s) **IGI LG649454322**

Comments: This Laboratory Grown Diamond was created by Chemical Vapor Deposition (CVD) growth process. Type IIa



IGI



August 30, 2024	IGI Report No LG649454322	2.08 CARATS	E	SI 1	Pointed
CUSHION BRILLIANT	9.06 X 6.58 X 4.37 MM	Carat Weight	Color Grade	Clarity Grade	Culet
		Depth	Table	Girdle	Polish
		66.4%	62%	Medium to Slightly Thick (Faceted)	Symmetry
					Fluorescence
					Inscription(s)
					EXCELLENT
					EXCELLENT
					NONE
					IGI LG649454322

Comments: This Laboratory Grown Diamond was created by Chemical Vapor Deposition (CVD) growth process. Type IIa