



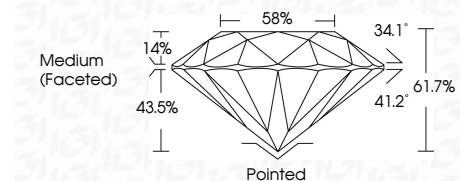
ELECTRONIC COPY

LG649455222 Report verification at igi.org



August 29, 2024 IGI Report Number LG649455222 Description LABORATORY GROWN DIAMOND Shape and Cutting Style ROUND BRILLIANT Measurements 6.52 - 6.55 X 4.03 MM

GRADING RESULTS Carat Weight 1.05 CARAT Color Grade D Clarity Grade VVS 2 Cut Grade IDEAL



ADDITIONAL GRADING INFORMATION Polish EXCELLENT Symmetry EXCELLENT Fluorescence NONE Inscription(s) LG649455222 Comments: As Grown - No indication of post-growth treatment. This Laboratory Grown Diamond was created by High Pressure High Temperature (HPHT) growth process. Type II



August 29, 2024 IGI Report No LG649455222 ROUND BRILLIANT 6.52 - 6.55 X 4.03 MM 1.05 CARAT D VVS 2 IDEAL 61.7% 58% Medium (Faceted) Pointed EXCELLENT EXCELLENT NONE NONE LG649455222

LABORATORY GROWN DIAMOND REPORT

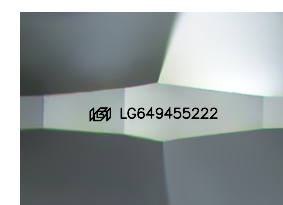
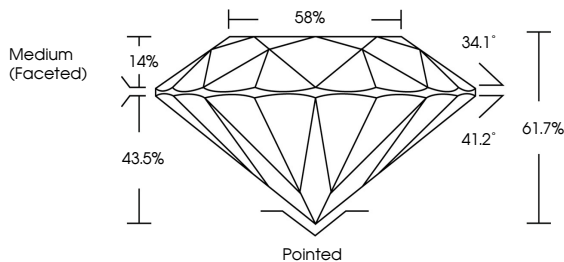
August 29, 2024 IGI Report Number LG649455222 Description LABORATORY GROWN DIAMOND Shape and Cutting Style ROUND BRILLIANT Measurements 6.52 - 6.55 X 4.03 MM

GRADING RESULTS Carat Weight 1.05 CARAT Color Grade D Clarity Grade VVS 2 Cut Grade IDEAL

ADDITIONAL GRADING INFORMATION Polish EXCELLENT Symmetry EXCELLENT Fluorescence NONE Inscription(s) LG649455222

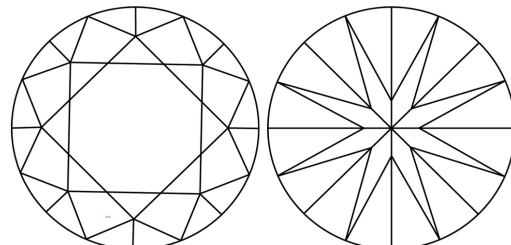
Comments: As Grown - No indication of post-growth treatment. This Laboratory Grown Diamond was created by High Pressure High Temperature (HPHT) growth process. Type II

PROPORTIONS



Sample Image Used

CLARITY CHARACTERISTICS



KEY TO SYMBOLS Red symbols indicate internal characteristics. Green symbols indicate external characteristics.

COLOR scale from D to J

CLARITY scale from IF to I 1-3

