



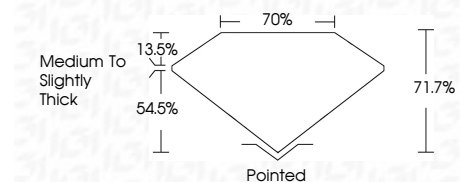
**ELECTRONIC COPY**

LG649455515  
Report verification at igi.org



September 4, 2024  
IGI Report Number **LG649455515**  
Description **LABORATORY GROWN DIAMOND**  
Shape and Cutting Style **PRINCESS CUT**  
Measurements **6.29 X 6.21 X 4.45 MM**

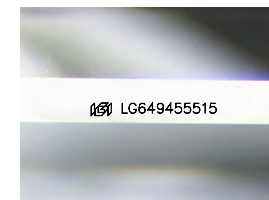
**GRADING RESULTS**  
Carat Weight **1.53 CARAT**  
Color Grade **E**  
Clarity Grade **VS 1**



**ADDITIONAL GRADING INFORMATION**  
Polish **EXCELLENT**  
Symmetry **EXCELLENT**  
Fluorescence **NONE**  
Inscription(s) **IGI LG649455515**  
Comments: This Laboratory Grown Diamond was created by Chemical Vapor Deposition (CVD) growth process. Type IIa

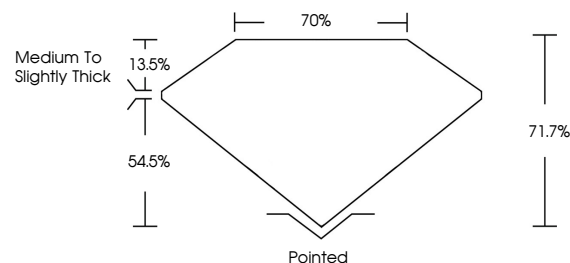


September 4, 2024  
IGI Report No **LG649455515**  
**PRINCESS CUT**  
**6.29 X 6.21 X 4.45 MM**  
Carat Weight **1.53 CARAT**  
Color Grade **E**  
Clarity Grade **VS 1**  
Depth **71.7%**  
Table **70%**  
Girdle **Medium to Slightly Thick**  
Culet **Pointed**  
Polish **EXCELLENT**  
Symmetry **EXCELLENT**  
Fluorescence **NONE**  
Inscription(s) **IGI LG649455515**  
Comments: This Laboratory Grown Diamond was created by Chemical Vapor Deposition (CVD) growth process. Type IIa

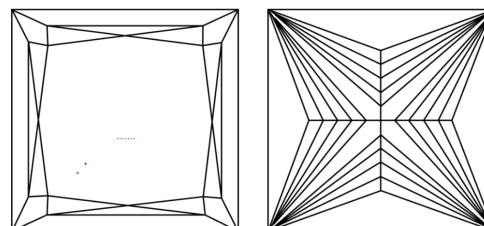


Sample Image Used

**PROPORTIONS**



**CLARITY CHARACTERISTICS**



**KEY TO SYMBOLS**

Red symbols indicate internal characteristics.  
Green symbols indicate external characteristics.

**COLOR**

D E F G H I J Faint Very Light Light

**CLARITY**

IF	VS <sup>1-2</sup>	VS <sup>1-2</sup>	SI <sup>1-2</sup>	I <sup>1-3</sup>
Internally Flawless	Very Very Slightly Included	Very Slightly Included	Slightly Included	Included

