



**INTERNATIONAL  
GEMOLOGICAL  
INSTITUTE**

**ELECTRONIC COPY**

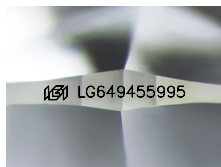
**LG649455995**



August 30, 2024  
**IGI Report Number** LG649455995  
**ROUND BRILLIANT**  
**LABORATORY GROWN DIAMOND**  
**5.27 - 5.29 X 3.26 MM**  
**Carat Weight** 0.56 CARAT  
**Color Grade** D  
**Clarity Grade** VS 1  
**Cut Grade** IDEAL  
**Polish** EXCELLENT  
**Symmetry** EXCELLENT  
**Fluorescence** NONE  
**Inscription(s)** IGI LG649455995

**LABORATORY GROWN DIAMOND REPORT**

August 30, 2024  
**IGI Report Number** LG649455995  
**Description** LABORATORY GROWN DIAMOND  
**Shape and Cutting Style** ROUND BRILLIANT  
**Measurements** 5.27 - 5.29 X 3.26 MM



Sample Image Used

**Comments:** As Grown - No indication of post-growth treatment. This Laboratory Grown Diamond was created by High Pressure High Temperature (HPHT) growth process. Type II

**GRADING RESULTS**

**Carat Weight** 0.56 CARAT  
**Color Grade** D  
**Clarity Grade** VS 1  
**Cut Grade** IDEAL

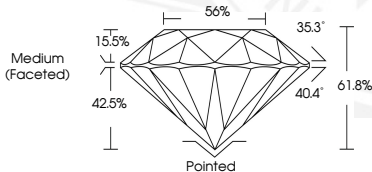
**ADDITIONAL GRADING INFORMATION**

**Polish** EXCELLENT  
**Symmetry** EXCELLENT  
**Fluorescence** NONE  
**Inscription(s)** IGI LG649455995

**Comments:** As Grown - No indication of post-growth treatment. This Laboratory Grown Diamond was created by High Pressure High Temperature (HPHT) growth process. Type II



August 30, 2024  
**IGI Report Number** LG649455995  
**ROUND BRILLIANT**  
**LABORATORY GROWN DIAMOND**  
**5.27 - 5.29 X 3.26 MM**  
**Carat Weight** 0.56 CARAT  
**Color Grade** D  
**Clarity Grade** VS 1  
**Cut Grade** IDEAL  
**Polish** EXCELLENT  
**Symmetry** EXCELLENT  
**Fluorescence** NONE  
**Inscription(s)** IGI LG649455995



THIS DOCUMENT WAS PRODUCED WITH THE FOLLOWING SECURITY MEASURES: SPECIAL DOCUMENT PAPER, INK SCREENS, WATERMARK, BACKGROUND DESIGN, HOLOGRAM AND OTHER SECURITY FEATURES NOT LISTED AND DO EXCEED DOCUMENT SECURITY INDUSTRY GUIDELINES.

For terms & conditions and to verify this report, please visit [www.igi.org](http://www.igi.org)