



**ELECTRONIC COPY**

LG649456405  
Report verification at igi.org



August 29, 2024

IGI Report Number **LG649456405**

Description **LABORATORY GROWN DIAMOND**

Shape and Cutting Style **OVAL BRILLIANT**

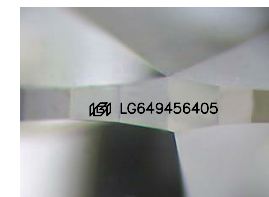
Measurements **9.53 X 6.72 X 4.31 MM**

**GRADING RESULTS**

Carat Weight **1.80 CARAT**

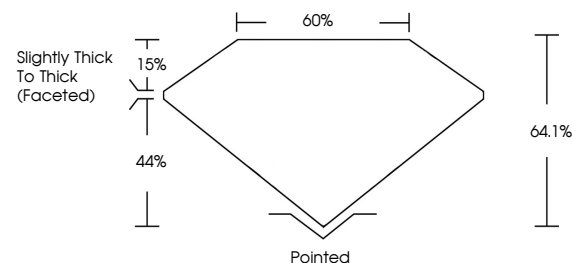
Color Grade **E**

Clarity Grade **VVS 2**

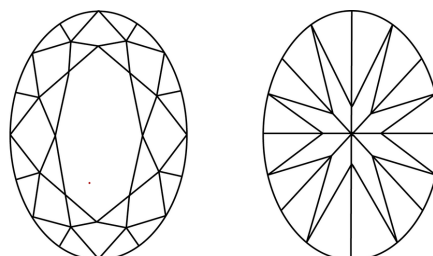


Sample Image Used

**PROPORTIONS**



**CLARITY CHARACTERISTICS**



**KEY TO SYMBOLS**

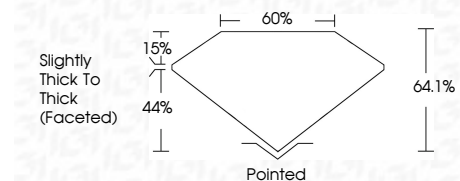
Red symbols indicate internal characteristics.  
Green symbols indicate external characteristics.

**COLOR**

D E F G H I J Faint Very Light Light

**CLARITY**

IF	VS <sup>1-2</sup>	VS <sup>1-2</sup>	SI <sup>1-2</sup>	I <sup>1-3</sup>
Internally Flawless	Very Very Slightly Included	Very Slightly Included	Slightly Included	Included



**ADDITIONAL GRADING INFORMATION**

Polish **EXCELLENT**

Symmetry **EXCELLENT**

Fluorescence **NONE**

Inscription(s) **IGI LG649456405**

Comments: This Laboratory Grown Diamond was created by Chemical Vapor Deposition (CVD) growth process. Type IIa



**IGI**



August 29, 2024  
IGI Report No LG649456405  
OVAL BRILLIANT  
9.53 X 6.72 X 4.31 MM  
Carat Weight 1.80 CARAT  
Color Grade E  
Clarity Grade VVS 2  
Depth 64.1%  
Table 60%  
Girdle Slightly Thick To Thick (Faceted)  
Culet Pointed  
Polish EXCELLENT  
Symmetry EXCELLENT  
Fluorescence NONE  
Inscription(s) IGI LG649456405  
Comments: This Laboratory Grown Diamond was created by Chemical Vapor Deposition (CVD) growth process. Type IIa