



ELECTRONIC COPY

LG649456630
Report verification at igi.org



August 29, 2024
IGI Report Number LG649456630
Description LABORATORY GROWN DIAMOND
Shape and Cutting Style ROUND BRILLIANT
Measurements 11.12 - 11.17 X 6.75 MM
GRADING RESULTS
Carat Weight 5.10 CARATS
Color Grade F
Clarity Grade VS 2
Cut Grade IDEAL

LABORATORY GROWN DIAMOND REPORT

August 29, 2024
IGI Report Number LG649456630
Description LABORATORY GROWN DIAMOND
Shape and Cutting Style ROUND BRILLIANT
Measurements 11.12 - 11.17 X 6.75 MM

GRADING RESULTS

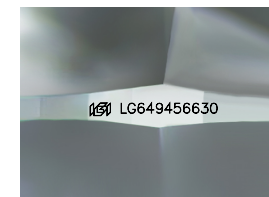
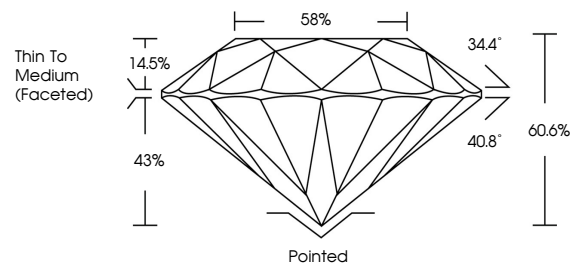
Carat Weight 5.10 CARATS
Color Grade F
Clarity Grade VS 2
Cut Grade IDEAL

ADDITIONAL GRADING INFORMATION

Polish EXCELLENT
Symmetry EXCELLENT
Fluorescence NONE
Inscription(s) IGI LG649456630

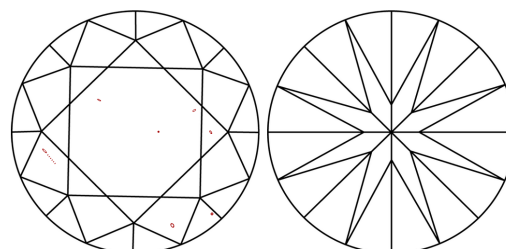
Comments: This Laboratory Grown Diamond was created by Chemical Vapor Deposition (CVD) growth process. Type IIa

PROPORTIONS



Sample Image Used

CLARITY CHARACTERISTICS



KEY TO SYMBOLS

Red symbols indicate internal characteristics.
Green symbols indicate external characteristics.

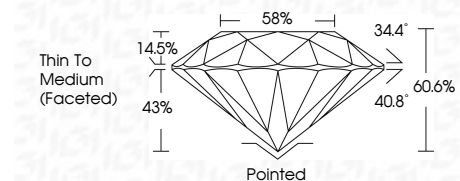
COLOR

D E F G H I J Faint Very Light Light

CLARITY

IF WS 1-2 VS 1-2 SI 1-2 I 1-3

Internally Flawless Very Very Slightly Included Very Slightly Included Slightly Included Included



ADDITIONAL GRADING INFORMATION

Polish EXCELLENT
Symmetry EXCELLENT
Fluorescence NONE
Inscription(s) IGI LG649456630
Comments: This Laboratory Grown Diamond was created by Chemical Vapor Deposition (CVD) growth process. Type IIa



Table with 2 columns: Property and Value. Includes: August 29, 2024, IGI Report No LG649456630, ROUND BRILLIANT, 11.12 - 11.17 X 6.75 MM, 5.10 CARATS, F, VS 2, IDEAL, 60.6%, 58%, Thin To Medium (Faceted), Pointed, EXCELLENT, EXCELLENT, NONE, IGI LG649456630, Comments: This Laboratory Grown Diamond was created by Chemical Vapor Deposition (CVD) growth process. Type IIa