



**ELECTRONIC COPY**

LG649456905  
Report verification at igi.org



September 3, 2024  
IGI Report Number **LG649456905**  
Description **LABORATORY GROWN DIAMOND**

Shape and Cutting Style **PEAR MODIFIED BRILLIANT**  
Measurements **9.85 X 5.89 X 3.73 MM**

**GRADING RESULTS**  
Carat Weight **1.51 CARAT**  
Color Grade **FANCY INTENSE YELLOW**  
Clarity Grade **VS 1**

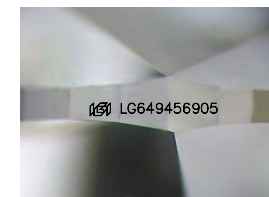
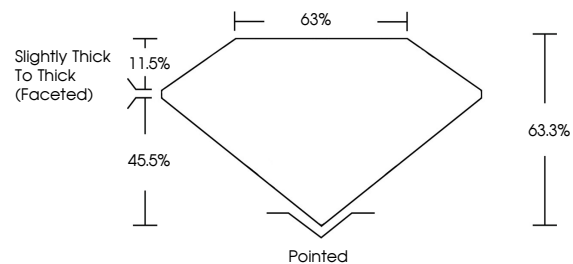
September 3, 2024  
IGI Report Number **LG649456905**  
Description **LABORATORY GROWN DIAMOND**  
Shape and Cutting Style **PEAR MODIFIED BRILLIANT**  
Measurements **9.85 X 5.89 X 3.73 MM**

**GRADING RESULTS**  
Carat Weight **1.51 CARAT**  
Color Grade **FANCY INTENSE YELLOW**  
Clarity Grade **VS 1**

**ADDITIONAL GRADING INFORMATION**  
Polish **EXCELLENT**  
Symmetry **EXCELLENT**  
Fluorescence **NONE**  
Inscription(s) **IGI LG649456905**

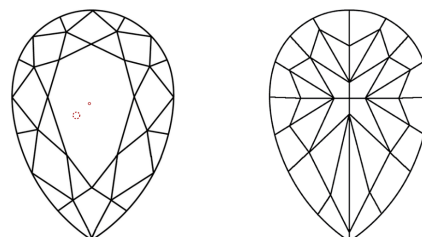
Comments: This Laboratory Grown Diamond was created by Chemical Vapor Deposition (CVD) growth process.

**PROPORTIONS**



Sample Image Used

**CLARITY CHARACTERISTICS**



**KEY TO SYMBOLS**

Red symbols indicate internal characteristics.  
Green symbols indicate external characteristics.

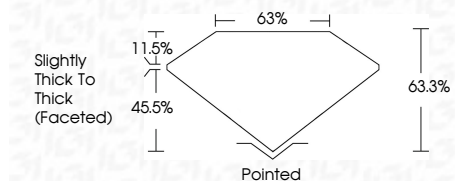
**COLOR**

D E F G H I J Faint Very Light Light

**CLARITY**

IF VS<sup>1-2</sup> VS<sup>1-2</sup> SI<sup>1-2</sup> I<sup>1-3</sup>

Internally Flawless Very Very Slightly Included Very Slightly Included Slightly Included Included



**ADDITIONAL GRADING INFORMATION**

Polish **EXCELLENT**  
Symmetry **EXCELLENT**  
Fluorescence **NONE**  
Inscription(s) **IGI LG649456905**

Comments: This Laboratory Grown Diamond was created by Chemical Vapor Deposition (CVD) growth process.



**IGI**



September 3, 2024  
IGI Report No **LG649456905**  
**PEAR MODIFIED BRILLIANT**  
9.85 X 5.89 X 3.73 MM  
1.51 CARAT  
Color Grade **FANCY INTENSE YELLOW**  
Clarity Grade **VS 1**  
Depth **63.3%**  
Table **63%**  
Girdle **Slightly Thick To Thick (Faceted)**  
Culet **Pointed**  
Polish **EXCELLENT**  
Symmetry **EXCELLENT**  
Fluorescence **NONE**  
Inscription(s) **IGI LG649456905**  
Comments: This Laboratory Grown Diamond was created by Chemical Vapor Deposition (CVD) growth process.