



**INTERNATIONAL
GEMOLOGICAL
INSTITUTE**

ELECTRONIC COPY

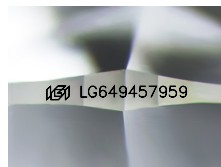
LG649457959



August 29, 2024
IGI Report Number LG649457959
CUSHION BRILLIANT
LABORATORY GROWN DIAMOND
7.11 X 5.14 X 3.43 MM
 Carat Weight **0.99 CARAT**
 Color Grade **D**
 Clarity Grade **VS 2**
 Polish **EXCELLENT**
 Symmetry **EXCELLENT**
 Fluorescence **NONE**
 Inscription(s) **IGI LG649457959**

LABORATORY GROWN DIAMOND REPORT

August 29, 2024
 IGI Report Number **LG649457959**
 Description **LABORATORY GROWN DIAMOND**
 Shape and Cutting Style **CUSHION BRILLIANT**
 Measurements **7.11 X 5.14 X 3.43 MM**



Sample Image Used

Comments: This Laboratory Grown Diamond was created by Chemical Vapor Deposition (CVD) growth process. Type IIa

GRADING RESULTS

Carat Weight **0.99 CARAT**
 Color Grade **D**
 Clarity Grade **VS 2**

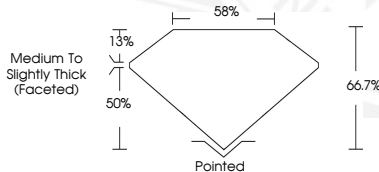
ADDITIONAL GRADING INFORMATION

Polish **EXCELLENT**
 Symmetry **EXCELLENT**
 Fluorescence **NONE**
 Inscription(s) **IGI LG649457959**

Comments: This Laboratory Grown Diamond was created by Chemical Vapor Deposition (CVD) growth process. Type IIa



August 29, 2024
IGI Report Number LG649457959
CUSHION BRILLIANT
LABORATORY GROWN DIAMOND
7.11 X 5.14 X 3.43 MM
 Carat Weight **0.99 CARAT**
 Color Grade **D**
 Clarity Grade **VS 2**
 Polish **EXCELLENT**
 Symmetry **EXCELLENT**
 Fluorescence **NONE**
 Inscription(s) **IGI LG649457959**



THIS DOCUMENT WAS PRODUCED WITH THE FOLLOWING SECURITY MEASURES: SPECIAL DOCUMENT PAPER, INK SCREENS, WATERMARK, BACKGROUND DESIGN, HOLOGRAM AND OTHER SECURITY FEATURES NOT LISTED AND DO EXCEED DOCUMENT SECURITY INDUSTRY GUIDELINES.

For terms & conditions and to verify this report, please visit www.igi.org