



ELECTRONIC COPY

LG649458243 Report verification at igi.org



August 29, 2024 IGI Report Number LG649458243 Description LABORATORY GROWN DIAMOND

Shape and Cutting Style CUT CORNERED RECTANGULAR MODIFIED BRILLIANT

Measurements 10.33 X 7.11 X 4.72 MM

GRADING RESULTS

Carat Weight 3.08 CARATS Color Grade E Clarity Grade VS 1

LABORATORY GROWN DIAMOND REPORT

August 29, 2024 IGI Report Number LG649458243 Description LABORATORY GROWN DIAMOND Shape and Cutting Style CUT CORNERED RECTANGULAR MODIFIED BRILLIANT Measurements 10.33 X 7.11 X 4.72 MM

GRADING RESULTS

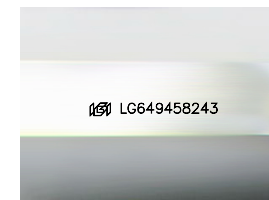
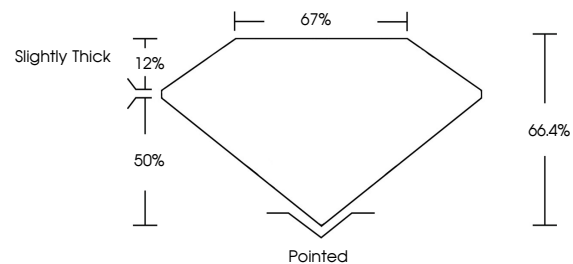
Carat Weight 3.08 CARATS Color Grade E Clarity Grade VS 1

ADDITIONAL GRADING INFORMATION

Polish EXCELLENT Symmetry EXCELLENT Fluorescence NONE Inscription(s) IGI LG649458243

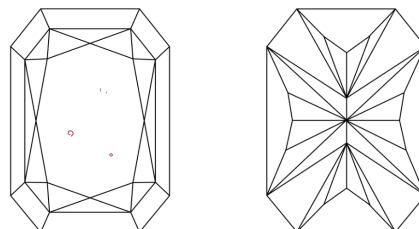
Comments: This Laboratory Grown Diamond was created by Chemical Vapor Deposition (CVD) growth process. Type IIa

PROPORTIONS



Sample Image Used

CLARITY CHARACTERISTICS



KEY TO SYMBOLS

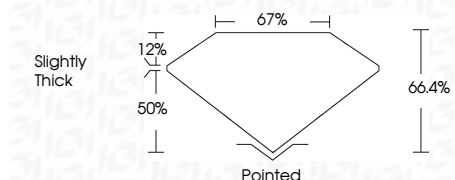
Red symbols indicate internal characteristics. Green symbols indicate external characteristics.

COLOR

D E F G H I J Faint Very Light Light

CLARITY

IF VS 1-2 VS 1-2 SI 1-2 I 1-3 Internally Flawless Very Very Slightly Included Very Slightly Included Slightly Included Included



ADDITIONAL GRADING INFORMATION

Polish EXCELLENT Symmetry EXCELLENT Fluorescence NONE Inscription(s) IGI LG649458243 Comments: This Laboratory Grown Diamond was created by Chemical Vapor Deposition (CVD) growth process. Type IIa



August 29, 2024 IGI Report No LG649458243 CUT CORNERED RECT. MODIFIED BRILLIANT 10.33 X 7.11 X 4.72 MM 3.08 CARATS E VS 1 66.4% 67% Slightly Thick Pointed EXCELLENT EXCELLENT NONE NONE IGI LG649458243 Comments: This Laboratory Grown Diamond was created by Chemical Vapor Deposition (CVD) growth process. Type IIa