



**ELECTRONIC COPY**

LG649458416  
Report verification at igi.org



September 2, 2024

IGI Report Number **LG649458416**

Description **LABORATORY GROWN DIAMOND**

Shape and Cutting Style **ROUND BRILLIANT**

Measurements **7.49 - 7.53 X 4.53 MM**

**GRADING RESULTS**

Carat Weight **1.57 CARAT**

Color Grade **E**

Clarity Grade **VVS 2**

Cut Grade **IDEAL**

September 2, 2024  
IGI Report Number **LG649458416**  
Description **LABORATORY GROWN DIAMOND**  
Shape and Cutting Style **ROUND BRILLIANT**  
Measurements **7.49 - 7.53 X 4.53 MM**

**GRADING RESULTS**

Carat Weight **1.57 CARAT**

Color Grade **E**

Clarity Grade **VVS 2**

Cut Grade **IDEAL**

**ADDITIONAL GRADING INFORMATION**

Polish **EXCELLENT**

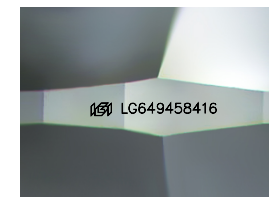
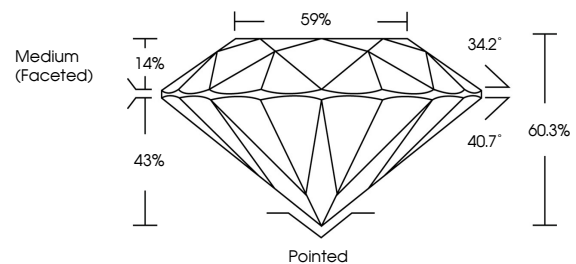
Symmetry **EXCELLENT**

Fluorescence **NONE**

Inscription(s) **LG649458416**

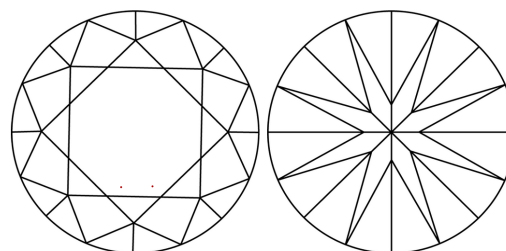
Comments: This Laboratory Grown Diamond was created by Chemical Vapor Deposition (CVD) growth process.  
Type IIa

**PROPORTIONS**



Sample Image Used

**CLARITY CHARACTERISTICS**



**KEY TO SYMBOLS**

Red symbols indicate internal characteristics.  
Green symbols indicate external characteristics.

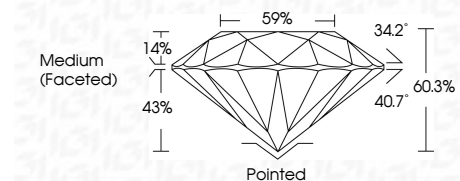
**COLOR**

D E F G H I J Faint Very Light Light

**CLARITY**

IF VS<sup>1-2</sup> VS<sup>1-2</sup> SI<sup>1-2</sup> I<sup>1-3</sup>

Internally Flawless Very Very Slightly Included Very Slightly Included Slightly Included Included



**ADDITIONAL GRADING INFORMATION**

Polish **EXCELLENT**

Symmetry **EXCELLENT**

Fluorescence **NONE**

Inscription(s) **LG649458416**

Comments: This Laboratory Grown Diamond was created by Chemical Vapor Deposition (CVD) growth process.  
Type IIa



**IGI**



September 2, 2024	IGI Report No LG649458416	1.57 CARAT	E	Pointed	EXCELLENT	EXCELLENT	NONE	LG649458416
ROUND BRILLIANT	7.49 - 7.53 X 4.53 MM	Color Grade	VVS 2	Cut Grade	IDEAL	60.3%	59%	Medium (Faceted)
		Clarity Grade	VVS 2	Polish	EXCELLENT	Symmetry	EXCELLENT	None
		Depth	60.3%	Fluorescence	NONE	Inscription(s)	LG649458416	
		Table	59%	Comments: This Laboratory Grown Diamond was created by Chemical Vapor Deposition (CVD) growth process.				Type IIa