



**ELECTRONIC COPY**

LG649460421  
Report verification at igi.org



August 29, 2024

IGI Report Number **LG649460421**

Description **LABORATORY GROWN DIAMOND**

Shape and Cutting Style **ROUND BRILLIANT**

Measurements **8.14 - 8.17 X 4.98 MM**

**GRADING RESULTS**

Carat Weight **2.03 CARATS**

Color Grade **D**

Clarity Grade **VS 1**

Cut Grade **IDEAL**

August 29, 2024

IGI Report Number **LG649460421**

Description **LABORATORY GROWN DIAMOND**

Shape and Cutting Style **ROUND BRILLIANT**

Measurements **8.14 - 8.17 X 4.98 MM**

**GRADING RESULTS**

Carat Weight **2.03 CARATS**

Color Grade **D**

Clarity Grade **VS 1**

Cut Grade **IDEAL**

**ADDITIONAL GRADING INFORMATION**

Polish **EXCELLENT**

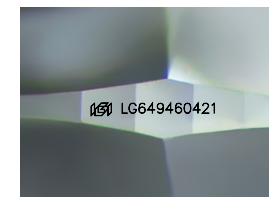
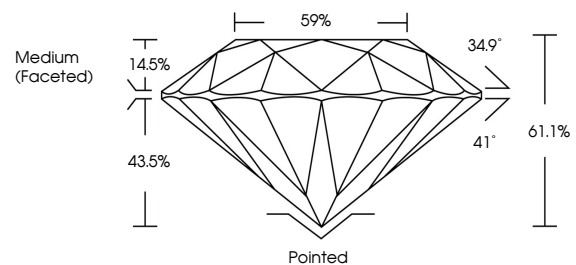
Symmetry **EXCELLENT**

Fluorescence **NONE**

Inscription(s) **LG649460421**

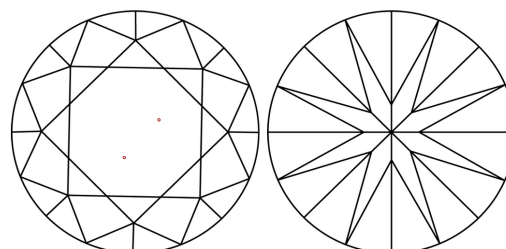
Comments: This Laboratory Grown Diamond was created by Chemical Vapor Deposition (CVD) growth process.  
Type IIa

**PROPORTIONS**



Sample Image Used

**CLARITY CHARACTERISTICS**



**KEY TO SYMBOLS**

Red symbols indicate internal characteristics.  
Green symbols indicate external characteristics.

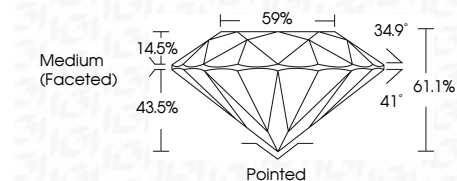
**COLOR**

D E F G H I J Faint Very Light Light

**CLARITY**

IF VS<sup>1-2</sup> VS<sup>1-2</sup> SI<sup>1-2</sup> I<sup>1-3</sup>

Internally Flawless Very Very Slightly Included Very Slightly Included Slightly Included Included



**ADDITIONAL GRADING INFORMATION**

Polish **EXCELLENT**

Symmetry **EXCELLENT**

Fluorescence **NONE**

Inscription(s) **LG649460421**

Comments: This Laboratory Grown Diamond was created by Chemical Vapor Deposition (CVD) growth process.  
Type IIa



**IGI**



|                       |                           |              |             |               |           |       |       |                  |         |           |           |              |                |
|-----------------------|---------------------------|--------------|-------------|---------------|-----------|-------|-------|------------------|---------|-----------|-----------|--------------|----------------|
| August 29, 2024       | IGI Report No LG649460421 | 2.03 CARATS  | D           | VS 1          | IDEAL     | 61.1% | 59%   | Medium (Faceted) | Pointed | EXCELLENT | EXCELLENT | NONE         | LG649460421    |
| 8.14 - 8.17 X 4.98 MM | ROUND BRILLIANT           | Carat Weight | Color Grade | Clarity Grade | Cut Grade | Depth | Table | Girdle           | Culet   | Polish    | Symmetry  | Fluorescence | Inscription(s) |

Comments: This Laboratory Grown Diamond was created by Chemical Vapor Deposition (CVD) growth process.  
Type IIa