



**ELECTRONIC COPY**

LG649460435  
Report verification at igi.org



August 31, 2024

IGI Report Number **LG649460435**

Description **LABORATORY GROWN DIAMOND**

Shape and Cutting Style **PEAR BRILLIANT**

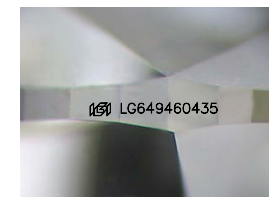
Measurements **10.39 X 6.56 X 3.99 MM**

**GRADING RESULTS**

Carat Weight **1.56 CARAT**

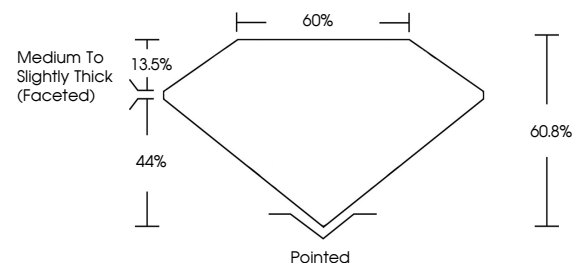
Color Grade **E**

Clarity Grade **VS 1**

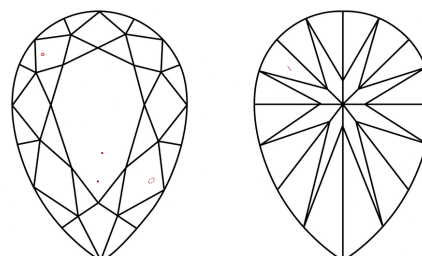


Sample Image Used

**PROPORTIONS**



**CLARITY CHARACTERISTICS**



**KEY TO SYMBOLS**

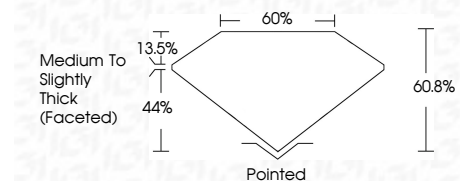
Red symbols indicate internal characteristics.  
Green symbols indicate external characteristics.

**COLOR**

D E F G H I J Faint Very Light Light

**CLARITY**

|                     |                             |                        |                   |                  |
|---------------------|-----------------------------|------------------------|-------------------|------------------|
| IF                  | VS <sup>1-2</sup>           | VS <sup>1-2</sup>      | SI <sup>1-2</sup> | I <sup>1-3</sup> |
| Internally Flawless | Very Very Slightly Included | Very Slightly Included | Slightly Included | Included         |



**ADDITIONAL GRADING INFORMATION**

Polish **EXCELLENT**

Symmetry **EXCELLENT**

Fluorescence **NONE**

Inscription(s) **IGI LG649460435**

Comments: This Laboratory Grown Diamond was created by Chemical Vapor Deposition (CVD) growth process. Type IIa



|                           |                        |                |            |        |       |                                    |                                    |              |                |   |                 |                 |
|---------------------------|------------------------|----------------|------------|--------|-------|------------------------------------|------------------------------------|--------------|----------------|---|-----------------|-----------------|
| August 31, 2024           | 1.56 CARAT             | E              | VS 1       | 60.8%  | 60%   | Medium to Slightly Thick (Faceted) | Pointed                            | EXCELLENT    | EXCELLENT      | NONE  | IGI LG649460435 |                 |
| IGI Report No LG649460435 | 10.39 X 6.56 X 3.99 MM | PEAR BRILLIANT | 1.56 CARAT | VS 1   | 60.8% | 60%                                | Medium to Slightly Thick (Faceted) | Pointed      | EXCELLENT      | EXCELLENT   | NONE            | IGI LG649460435 |
| Carat Weight              | Color Grade            | Clarity Grade  | Table      | Girdle | Culet | Polish                             | Symmetry                           | Fluorescence | Inscription(s) | Comments: This Laboratory Grown Diamond was created by Chemical Vapor Deposition (CVD) growth process. Type IIa |                 |                 |