



ELECTRONIC COPY

LG649460870
Report verification at igi.org



August 31, 2024

IGI Report Number **LG649460870**

Description **LABORATORY GROWN DIAMOND**

Shape and Cutting Style **PRINCESS CUT**

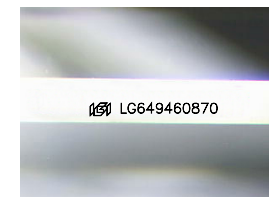
Measurements **7.04 X 6.95 X 4.89 MM**

GRADING RESULTS

Carat Weight **2.07 CARATS**

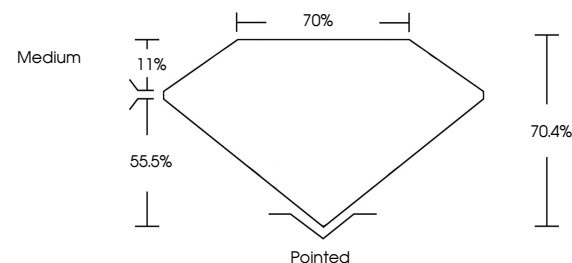
Color Grade **E**

Clarity Grade **VS 1**

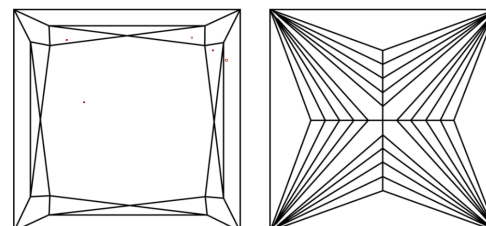


Sample Image Used

PROPORTIONS



CLARITY CHARACTERISTICS



KEY TO SYMBOLS

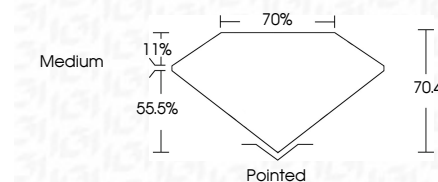
Red symbols indicate internal characteristics.
Green symbols indicate external characteristics.

COLOR

D E F G H I J Faint Very Light Light

CLARITY

IF	VS ¹⁻²	VS ¹⁻²	SI ¹⁻²	I ¹⁻³
Internally Flawless	Very Very Slightly Included	Very Slightly Included	Slightly Included	Included



ADDITIONAL GRADING INFORMATION

Polish **EXCELLENT**

Symmetry **EXCELLENT**

Fluorescence **NONE**

Inscription(s) **IGI LG649460870**

Comments: This Laboratory Grown Diamond was created by Chemical Vapor Deposition (CVD) growth process.
Type IIa



IGI



August 31, 2024
IGI Report No LG649460870
PRINCESS CUT
7.04 X 6.95 X 4.89 MM
2.07 CARATS
E
VS 1
70.4%
70%
Medium
Pointed
EXCELLENT
EXCELLENT
NONE
IGI LG649460870
Comments: This Laboratory Grown Diamond was created by Chemical Vapor Deposition (CVD) growth process.
Type IIa